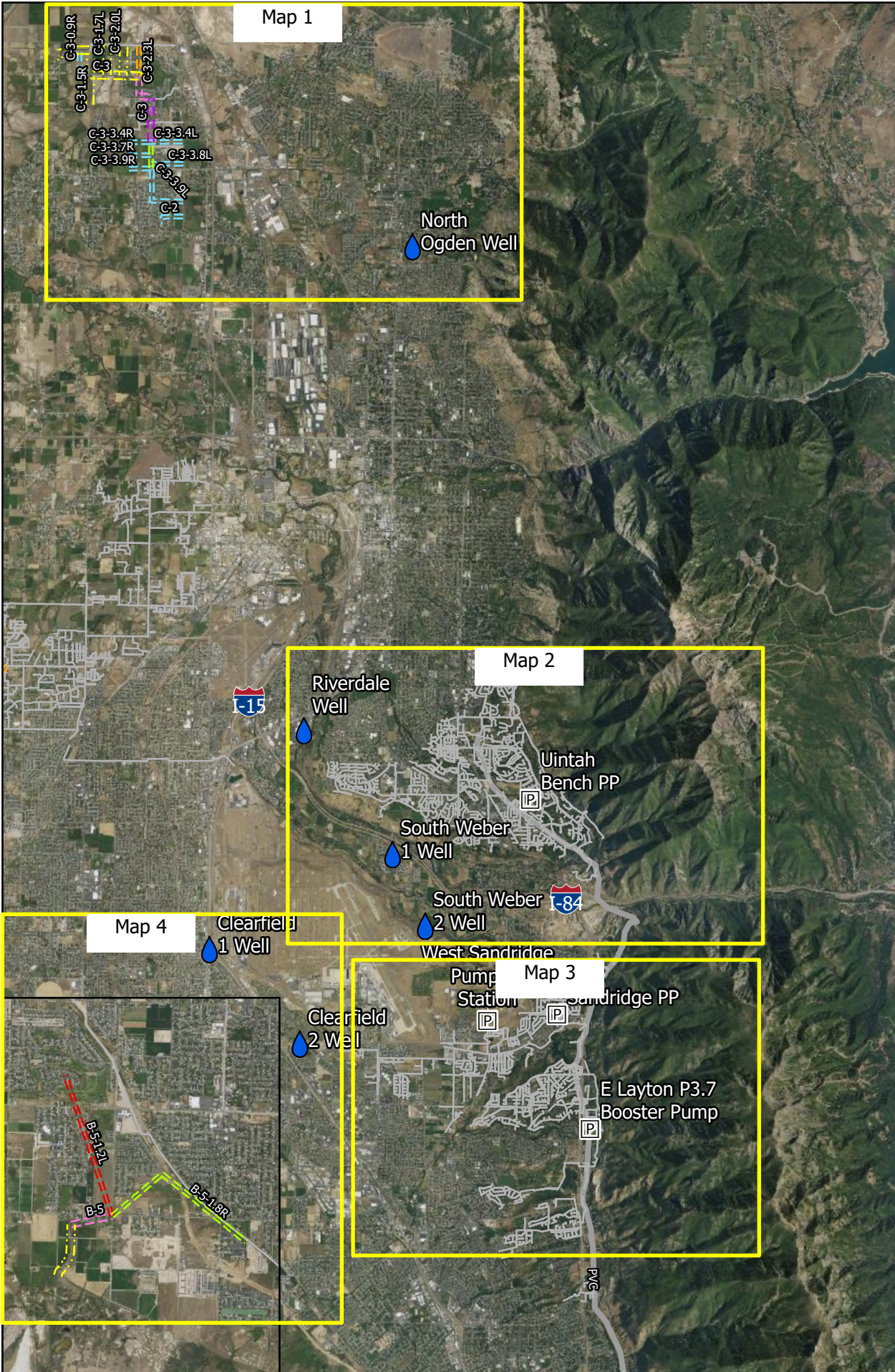


Infrastructure to Transfer (North)



1 inch is 11,667 ft

To Transfer

Pumping Stations

Drains

- 10"
- 12"
- 14"
- 15"
- 16"
- 18"
- 20"
- 21"
- 24"
- Open

Pipelines

- Pipelines
- Wells

WBW (No Transfer)

- Secondary Pipelines
- Aqueducts

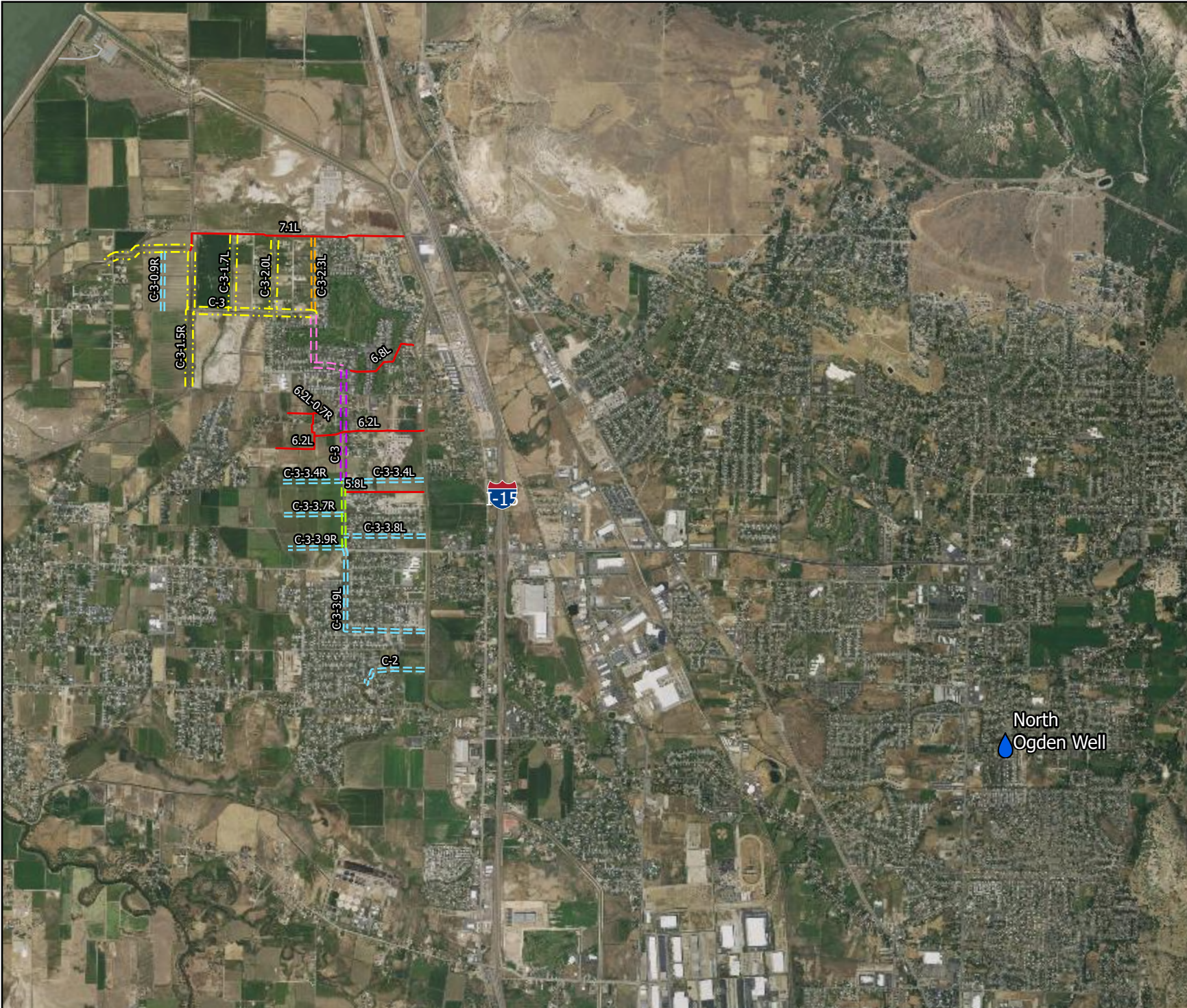
Every effort has been made to provide the most accurate information for this map however, WBWCD assumes no responsibility for errors or omissions in this map and disclaims any responsibility for the accuracy or correctness of the data. WBWCD makes no warranty, expressed or implied, as to the accuracy or completeness of this information. All utilities will need to be potholed to verify exact location. Data subject to change without notice.



Infrastructure to Transfer: Farr West (Map 1)



1 inch is 4,417 ft



To Transfer

Pumping Stations

Drains

- 10"
- 12"
- 14"
- 15"
- 16"
- 18"
- 20"
- 21"
- 24"
- Open

Pipelines

Wells

WBW (No Transfer)

Secondary Pipelines

Aqueducts

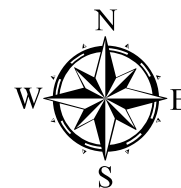
Every effort has been made to provide the most accurate information for this map however, WBWCD assumes no responsibility for errors or omissions in this map and disclaims any responsibility for the accuracy or correctness of the data. WBWCD makes no warranty, expressed or implied, as to the accuracy or completeness of this information. All utilities will need to be potholed to verify exact location. Data subject to change without notice.

North Ogden Well

Know what's below. **Call 811** before you dig.
 BLUE STAKES OF UTAH
 UTILITY NOTIFICATION CENTER, INC.
 www.bluestakes.org
 1-800-662-4111

WEBER BASIN WATER CONSERVANCY DISTRICT

Infrastructure to Transfer: South Ogden (Map 2)



1 inch is 4,417 ft

To Transfer

Pumping Stations

Drains

- 10"
- 12"
- 14"
- 15"
- 16"
- 18"
- 20"
- 21"
- 24"
- Open

Pipelines

Wells

WBW (No Transfer)

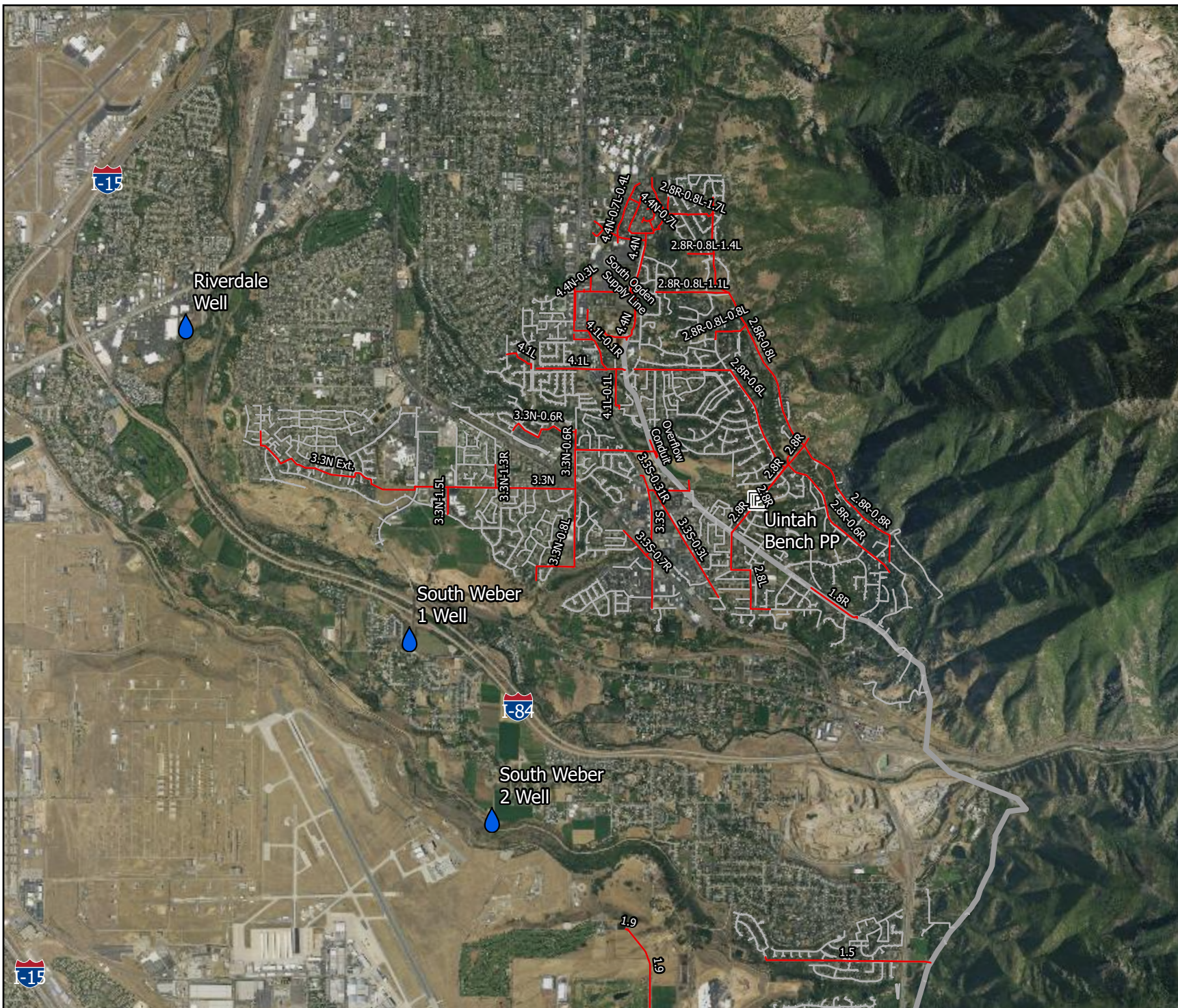
Secondary Pipelines

Aqueducts

Every effort has been made to provide the most accurate information for this map however, WBWCD assumes no responsibility for errors or omissions in this map and disclaims any responsibility for the accuracy or correctness of the data. WBWCD makes no warranty, expressed or implied, as to the accuracy or completeness of this information. All liabilities will need to be potholed to verify exact location. Data subject to change without notice.



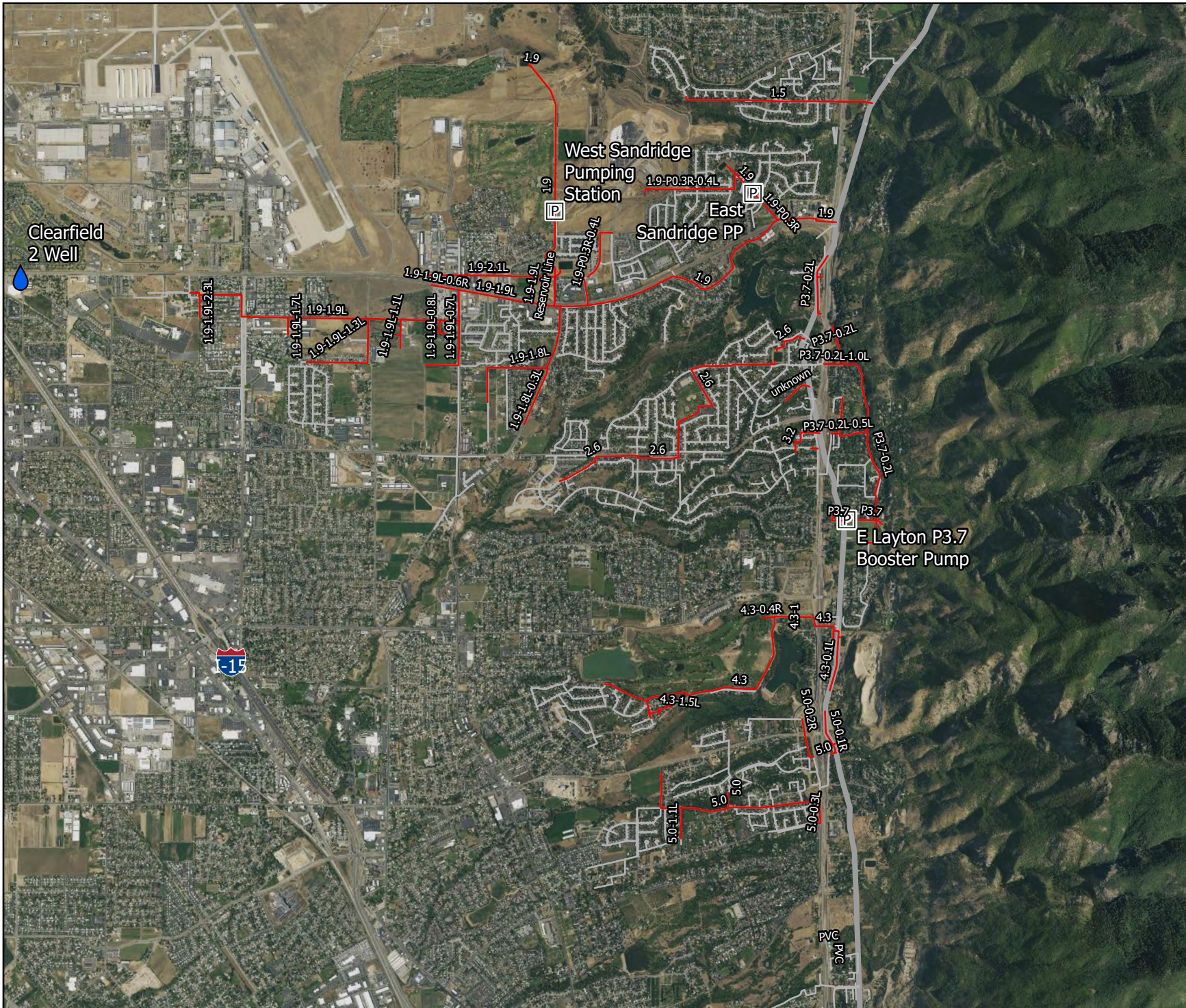
9/4/2024



Infrastructure to Transfer: Layton (Map 3)



1 inch is 3,917 ft



To Transfer

Pumping Stations

Drains

- 10"
- 12"
- 14"
- 15"
- 16"
- 18"
- 20"
- 21"
- 24"
- Open

Pipelines

Wells

WBW (No Transfer)

Secondary Pipelines

Aqueducts

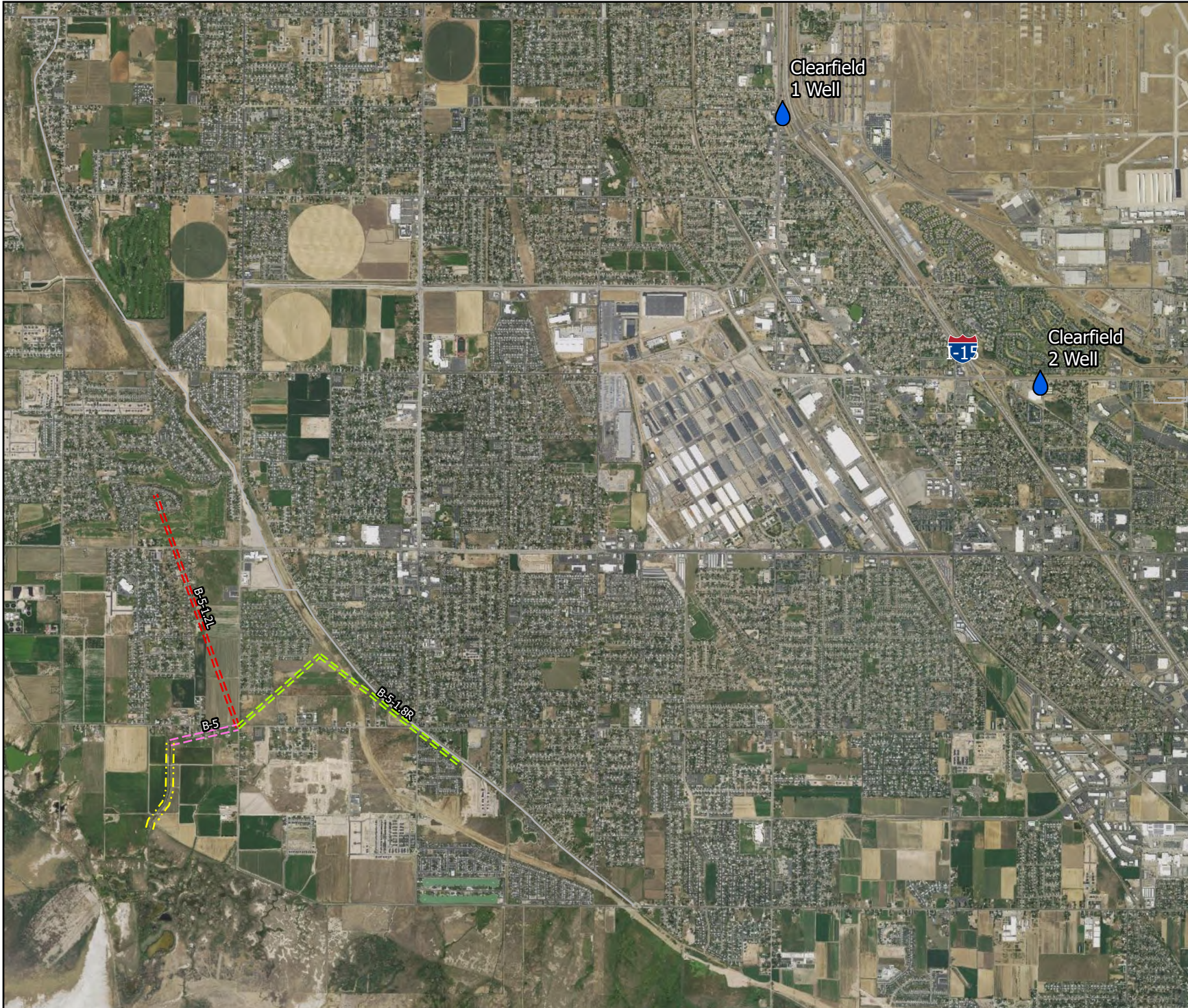
Every effort has been made to provide the most accurate information for this map however, WBWCD assumes no responsibility for errors or omissions in this map and disclaims any responsibility for the accuracy or correctness of the data. WBWCD makes no warranty, expressed or implied, as to the accuracy or completeness of this information. All utilities will need to be potholed to verify exact location. Data subject to change without notice.



Infrastructure to Transfer: Syracuse (Map 4)



1 inch is 3,917 ft



To Transfer

Pumping Stations

Drains

- 10"
- 12"
- 14"
- 15"
- 16"
- 18"
- 20"
- 21"
- 24"
- Open

Pipelines

Wells

WBW (No Transfer)

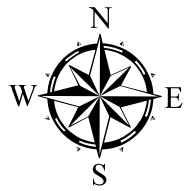
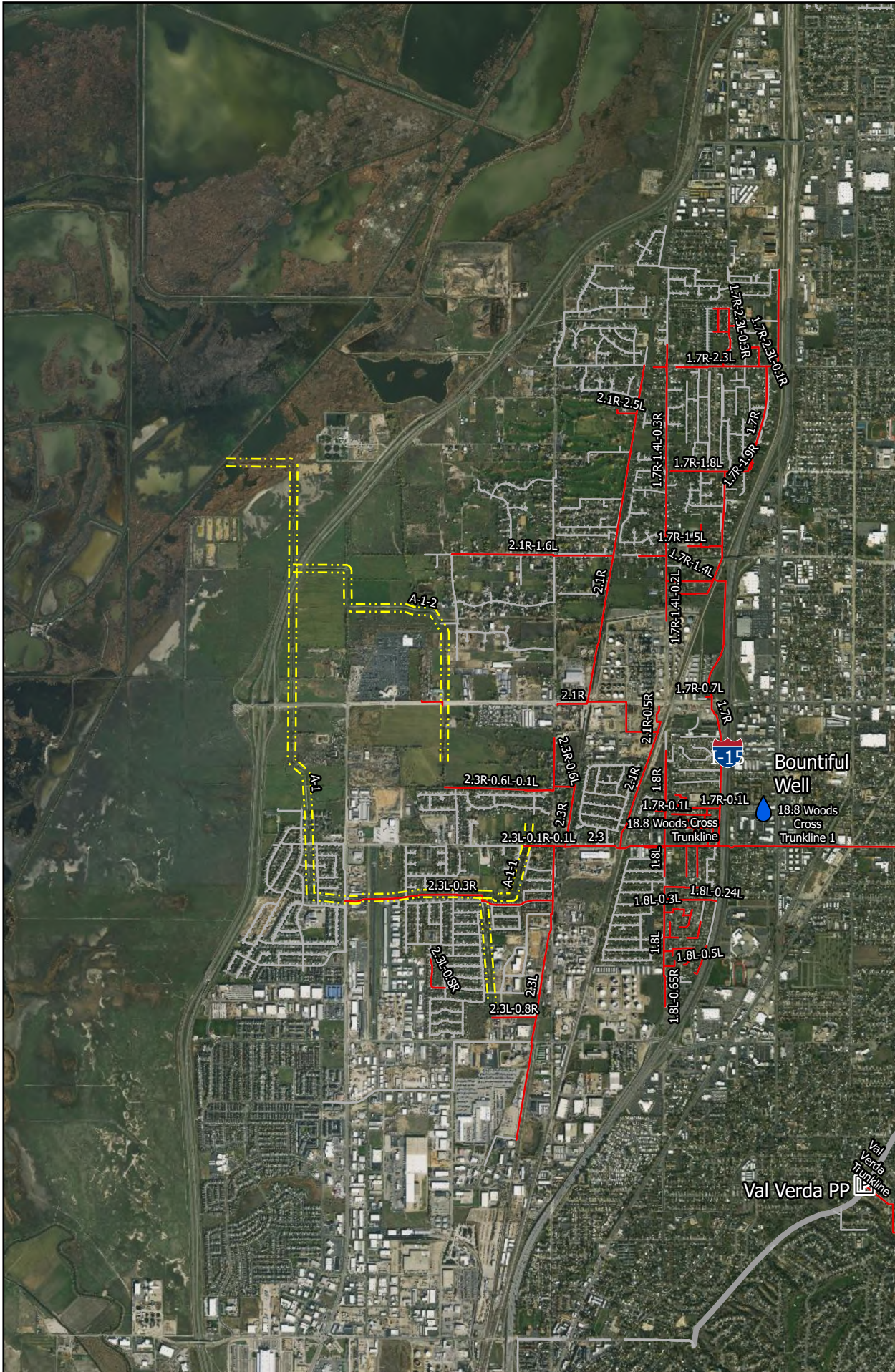
Secondary Pipelines

Aqueducts

Every effort has been made to provide the most accurate information for this map however, WBWCD assumes no responsibility for errors or omissions in this map and disclaims any responsibility for the accuracy or correctness of the data. WBWCD makes no warranty, expressed or implied, as to the accuracy or completeness of this information. All utilities will need to be potholed to verify exact location. Data subject to change without notice.



Infrastructure to Transfer: Woods Cross (Map 6)



1 inch is 3,333 ft

To Transfer

- Pumping Stations
- Open
- Pipelines
- Wells

WBW (No Transfer)

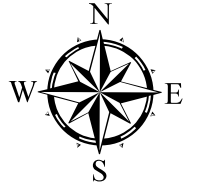
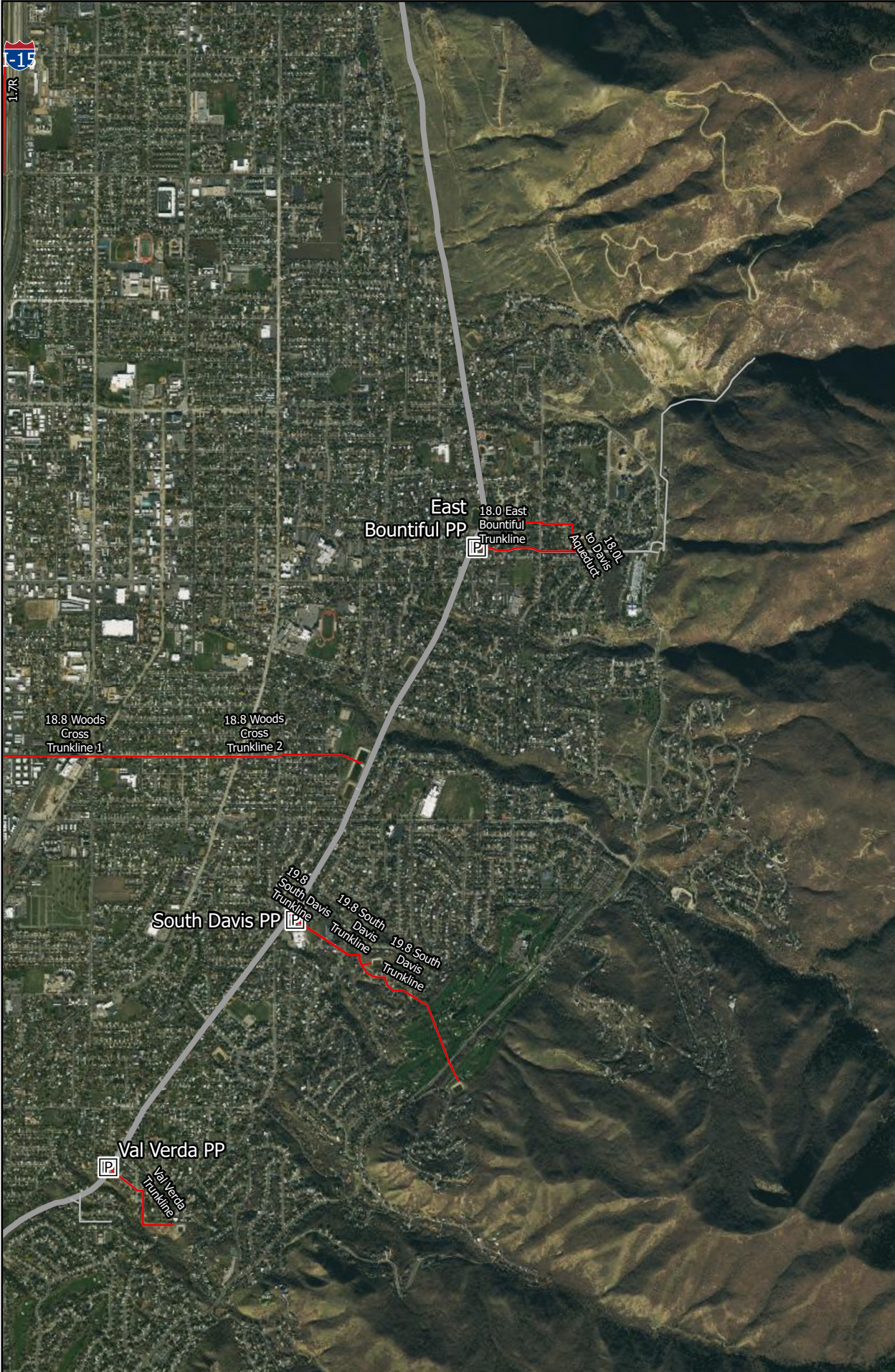
- Secondary Pipelines
- Aqueducts

Every effort has been made to provide the most accurate information for this map however, WBWCD assumes no responsibility for errors or omissions in this map and disclaims any responsibility for the accuracy or correctness of the data. WBWCD makes no warranty, expressed or implied, as to the accuracy or completeness of this information. All utilities will need to be potholed to verify exact location. Data subject to change without notice.

Know what's below. 811
Call 811 before you dig.
BLUE STAKES OF UTAH
 UTILITY NOTIFICATION CENTER, INC.
www.bluestakes.org
 1-800-662-4111


WEBER BASIN WATER CONSERVANCY DISTRICT

Infrastructure to Transfer: Bountiful (Map 7)



1 inch is 2,750 ft


To Transfer


 Pumping Stations

Pipelines

 Pipelines

WBW (No Transfer)

 Secondary Pipelines

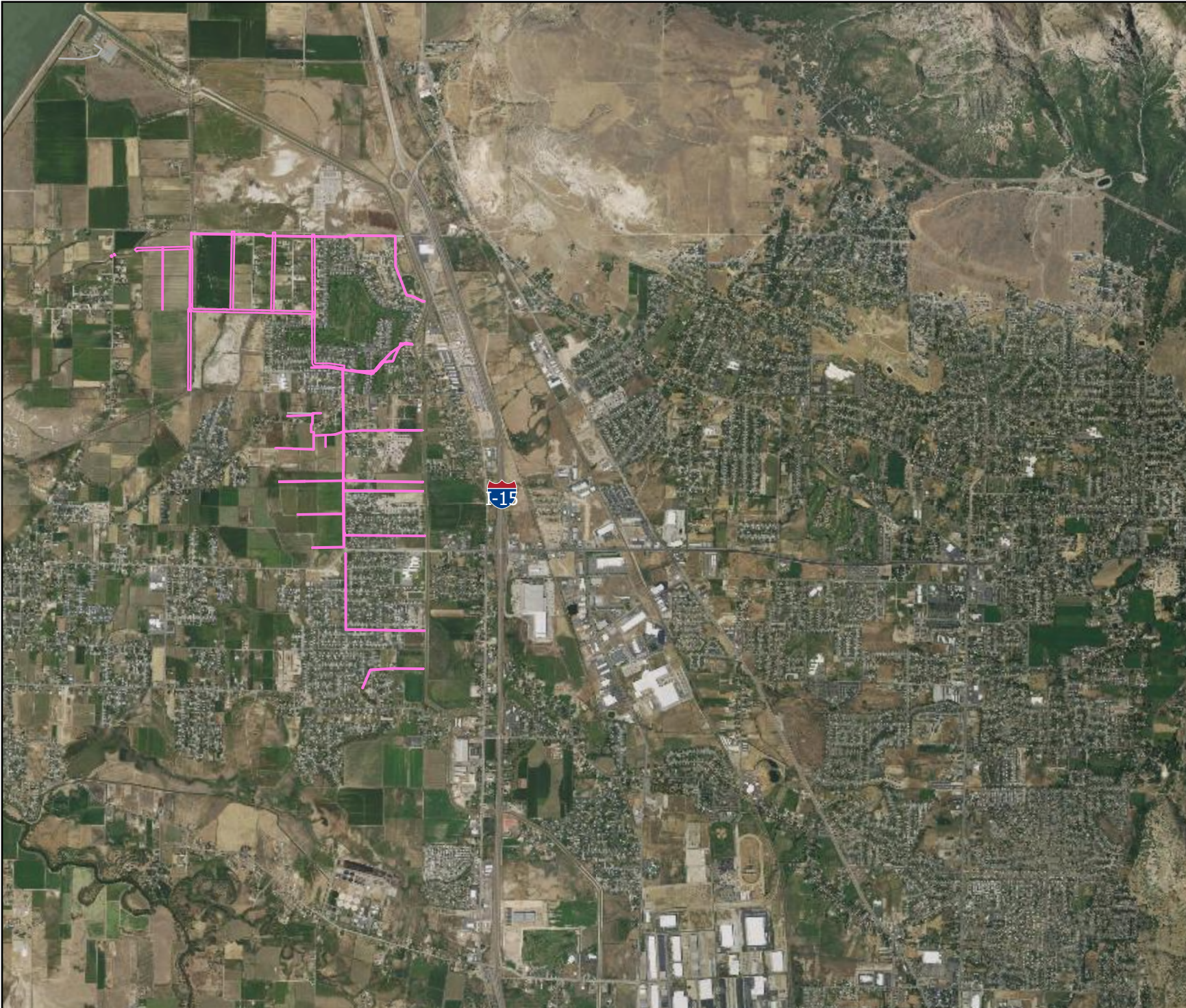
 Aqueducts

Every effort has been made to provide the most accurate information for this map however, WBWCD assumes no responsibility for errors or omissions in this map and disclaims any responsibility for the accuracy or correctness of the data. WBWCD makes no warranty, expressed or implied, as to the accuracy or completeness of this information. All utilities will need to be potholed to verify exact location. Data subject to change without notice.



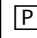
9/4/2024


Easements to Transfer: Farr West (Map 1)




1 inch is 4,417 ft


To Transfer

 Pumping Stations

 USA Easements

WBW (No Transfer)

 Secondary Pipelines

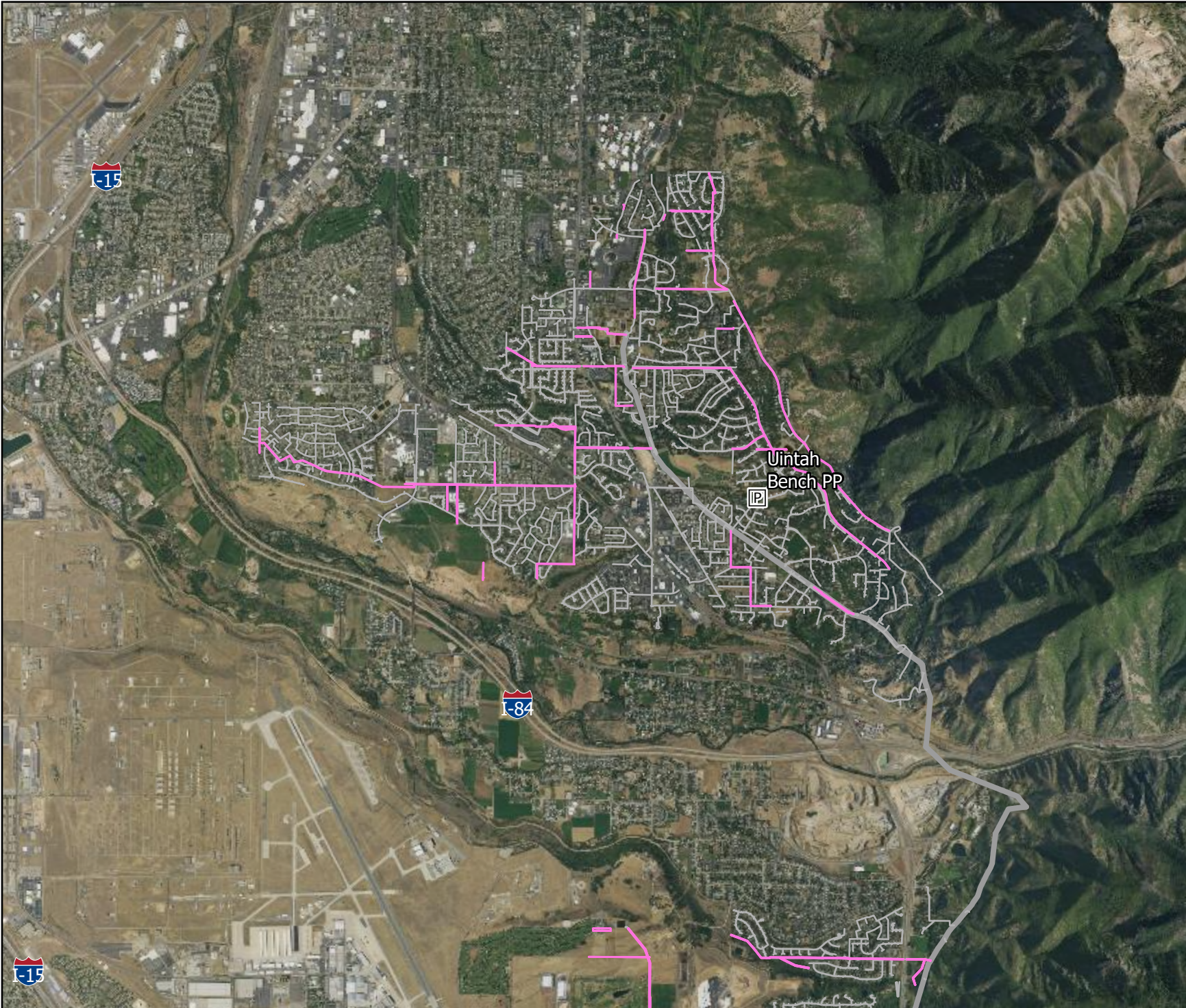
 Aqueducts

Every effort has been made to provide the most accurate information for this map however, WBWCD assumes no responsibility for errors or omissions in this map and disclaims any responsibility for the accuracy or correctness of the data. WBWCD makes no warranty, expressed or implied, as to the accuracy or completeness of this information. All liabilities will need to be potholed to verify exact location. Data subject to change without notice.



9/4/2024

Easements to Transfer: South Ogden (Map 2)



1 inch is 4,417 ft

To Transfer

Pumping Stations

USA Easements

WBW (No Transfer)

Secondary Pipelines

Aqueducts

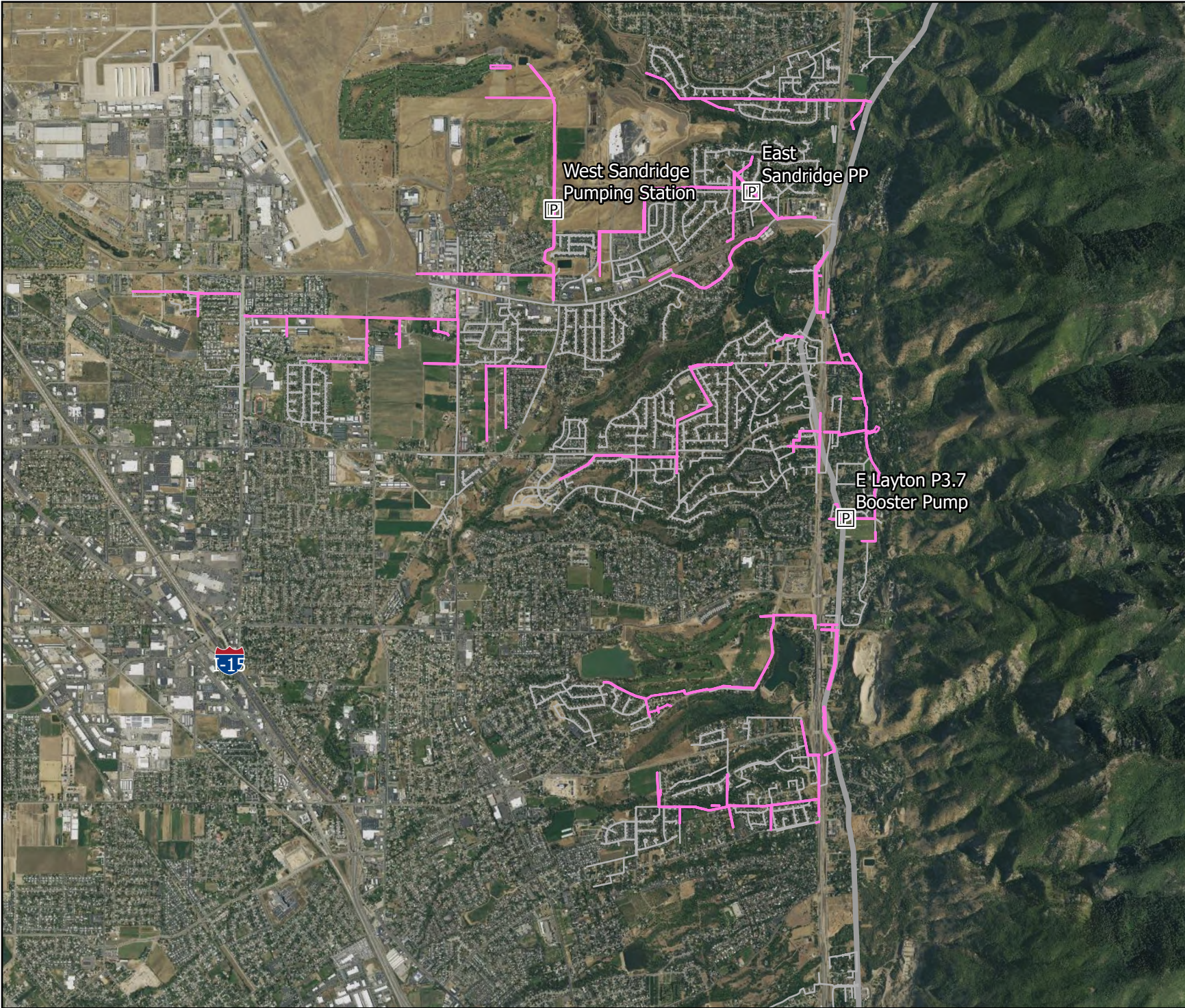
Every effort has been made to provide the most accurate information for this map however, WBWCD assumes no responsibility for errors or omissions in this map and disclaims any responsibility for the accuracy or correctness of the data. WBWCD makes no warranty, expressed or implied, as to the accuracy or completeness of this information. All utilities will need to be potholed to verify exact location. Data subject to change without notice.

Know what's below. Call 811 before you dig.
BLUE STAKES OF UTAH
UTILITY NOTIFICATION CENTER, INC.
www.bluestakes.org
1-800-662-4111

WEBER BASIN WATER
CONSERVANCY DISTRICT

9/4/2024

Easements to Transfer: Layton (Map 3)



1 inch is 3,917 ft

To Transfer

Pumping Stations

USA Easements

WBW (No Transfer)

Secondary Pipelines

Aqueducts

Every effort has been made to provide the most accurate information for this map however, WBWCD assumes no responsibility for errors or omissions in this map and disclaims any responsibility for the accuracy or correctness of the data. WBWCD makes no warranty, expressed or implied, as to the accuracy or completeness of this information. All utilities will need to be potholed to verify exact location. Data subject to change without notice.

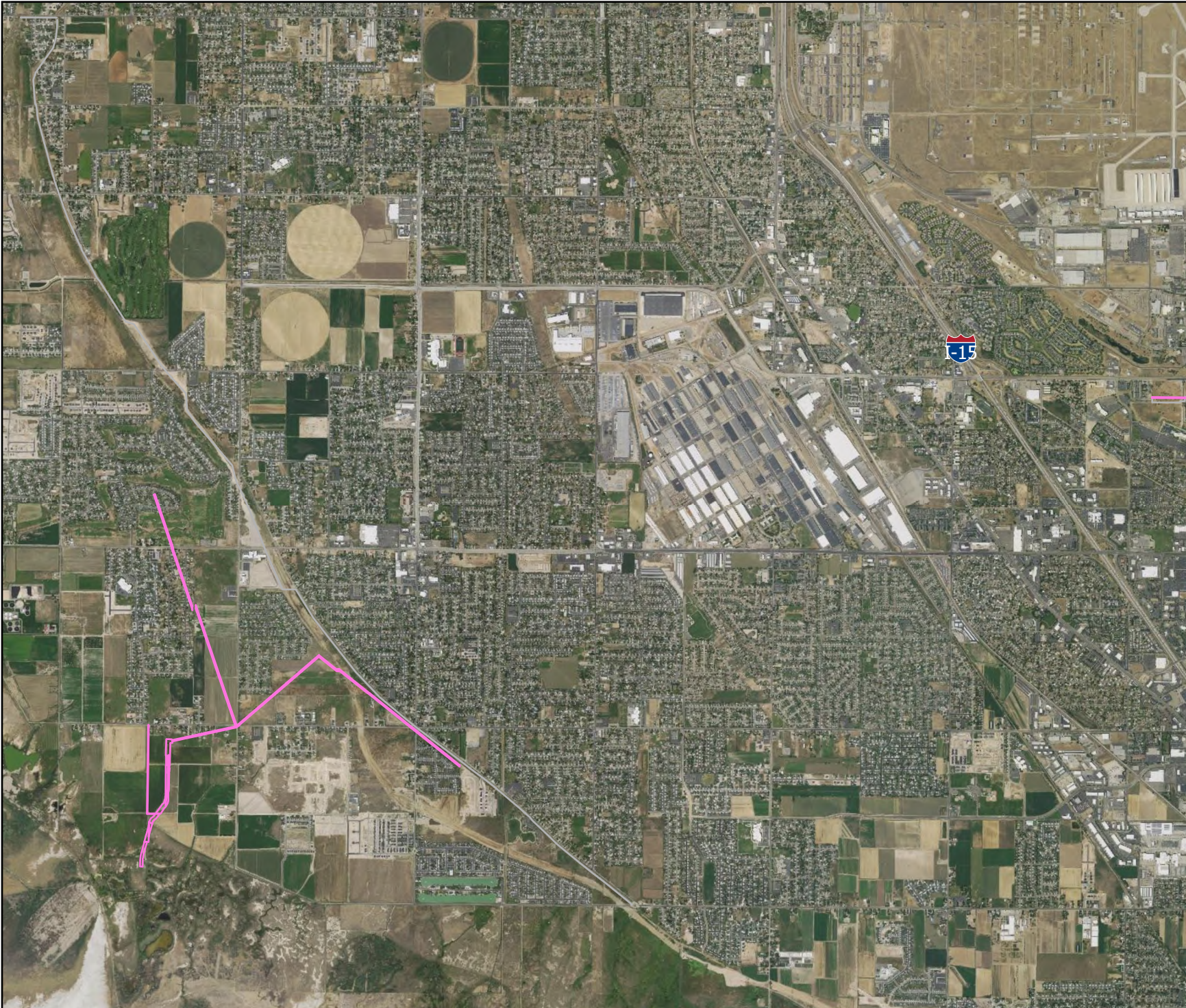
Know what's below. 811

Call 811 before you dig.

BLUE STAKES OF UTAH
UTILITY NOTIFICATION CENTER, INC.
www.bluestakes.org
1-800-662-4111



Easements to Transfer: Syracuse (Map 4)



1 inch is 3,917 ft

To Transfer

Pumping Stations

USA Easements

WBW (No Transfer)

Secondary Pipelines

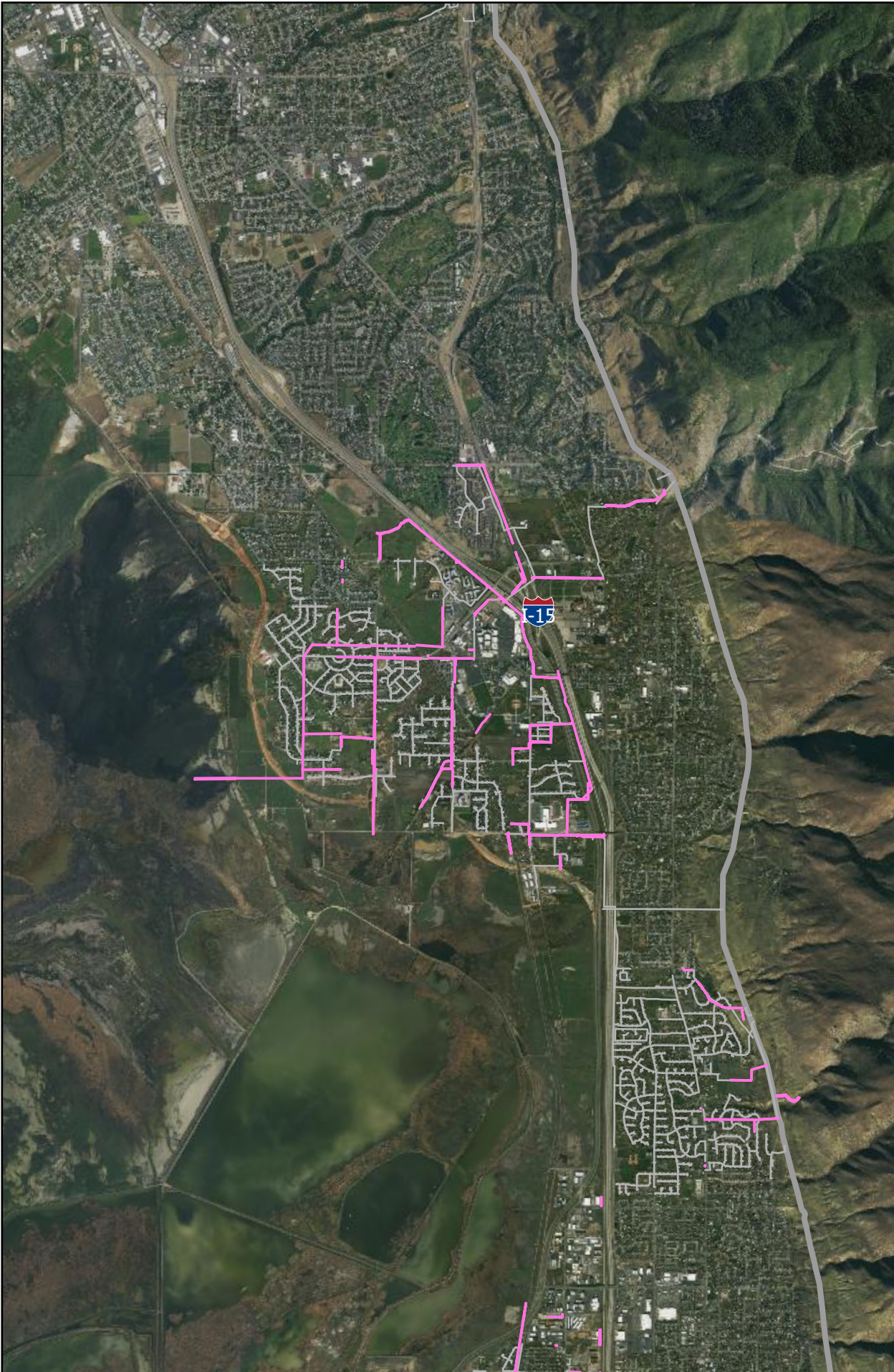
Aqueducts

Every effort has been made to provide the most accurate information for this map however, WBWCD assumes no responsibility for errors or omissions in this map and disclaims any responsibility for the accuracy or correctness of the data. WBWCD makes no warranty, expressed or implied, as to the accuracy or completeness of this information. All utilities will need to be potholed to verify exact location. Data subject to change without notice.




9/4/2024

Easements to Transfer: Farmington (Map 5)





1 inch is 4,833 ft

To Transfer

 USA Easements

WBW (No Transfer)

 Secondary Pipelines

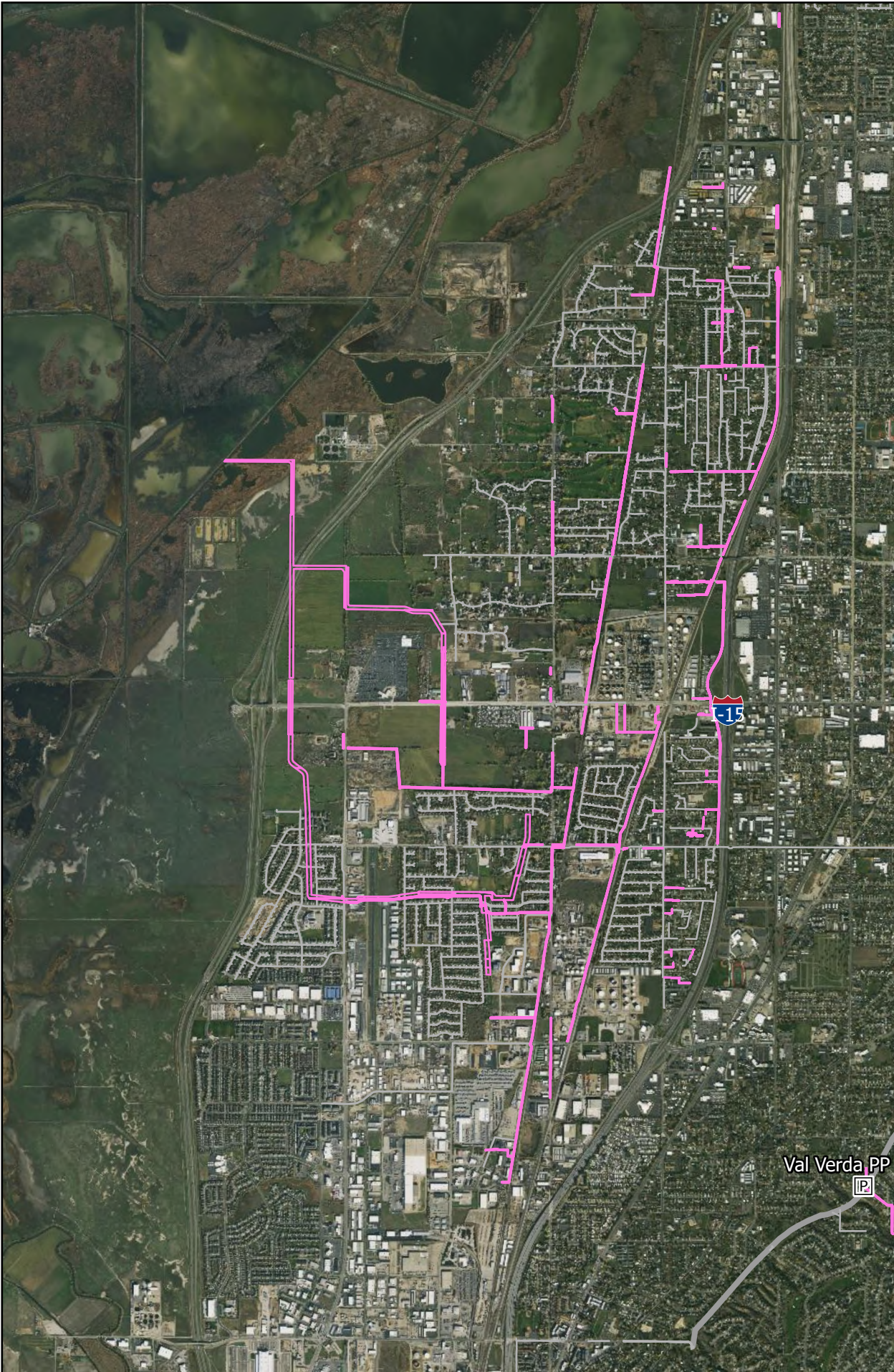
 Aqueducts

Every effort has been made to provide the most accurate information for this map however, WBWCD assumes no responsibility for errors or omissions in this map and disclaims any responsibility for the accuracy or correctness of the data. WBWCD makes no warranty, expressed or implied, as to the accuracy or completeness of this information. All utilities will need to be potholed to verify exact location. Data subject to change without notice.



9/4/2024

Easements to Transfer: Woods Cross (Map 6)



1 inch is 3,333 ft

To Transfer

Pumping Stations

USA Easements

WBW (No Transfer)

Secondary Pipelines

Aqueducts

Every effort has been made to provide the most accurate information for this map however, WBWCD assumes no responsibility for errors or omissions in this map and disclaims any responsibility for the accuracy or correctness of the data. WBWCD makes no warranty, expressed or implied, as to the accuracy or completeness of this information. All utilities will need to be potholed to verify exact location. Data subject to change without notice.

Know what's below. 811
Call 811 before you dig.

BLUE STAKES OF UTAH
UTILITY NOTIFICATION CENTER, INC.
www.bluestakes.org
1-800-662-4111

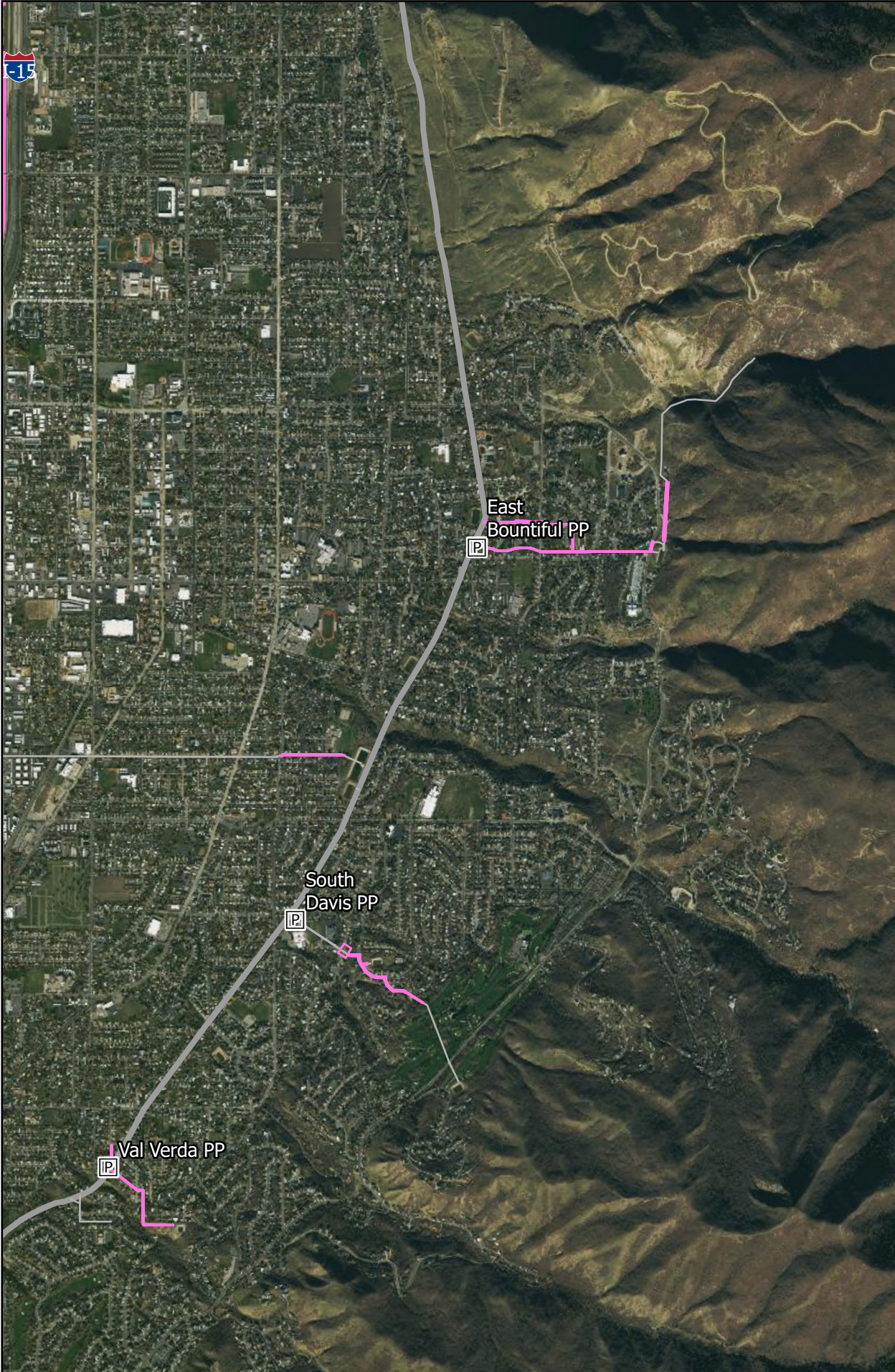
Val Verda PP



WEBER BASIN WATER
CONSERVANCY DISTRICT

9/4/2024

Easements to Transfer: Bountiful (Map 7)



1 inch is 2,750 ft

To Transfer

- Pumping Stations
- USA Easements

WBW (No Transfer)

- Secondary Pipelines
- Aqueducts

Every effort has been made to provide the most accurate information for this map however, WBWCD assumes no responsibility for errors or omissions in this map and disclaims any responsibility for the accuracy or correctness of the data. WBWCD makes no warranty, expressed or implied, as to the accuracy or completeness of this information. All utilities will need to be potholed to verify exact location. Data subject to change without notice.



9/4/2024