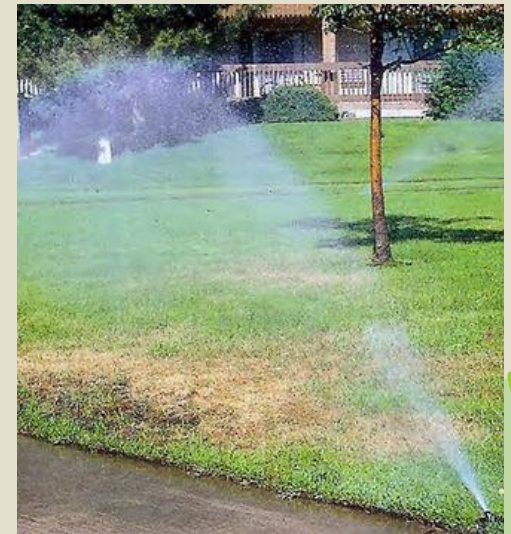


Spring Perennials



Why Conserve Water?

- Utah is the 2nd highest water user in the Nation Utah has the 2nd lowest amount of annual precipitation Water is a Limited Resource Current demand is outpacing supply Population growth will increase water demands Utahns use 293 gallons per person per day National average is 179 gallons
-
-



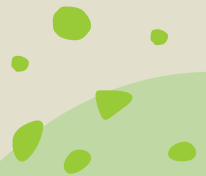


What Should We do?

ZeroScape? XeriScape?

LocalScape? Water Wise

Landscape?



Definition: ZeroScape

ZEROSCAPE = no scape

- Zero (none, nothing, empty...)
- Scape (Vista)
- Pronounced (Zeroscape)

A hot, dry landscape with a few prickly plants, lots of rocks and a few cow skulls...



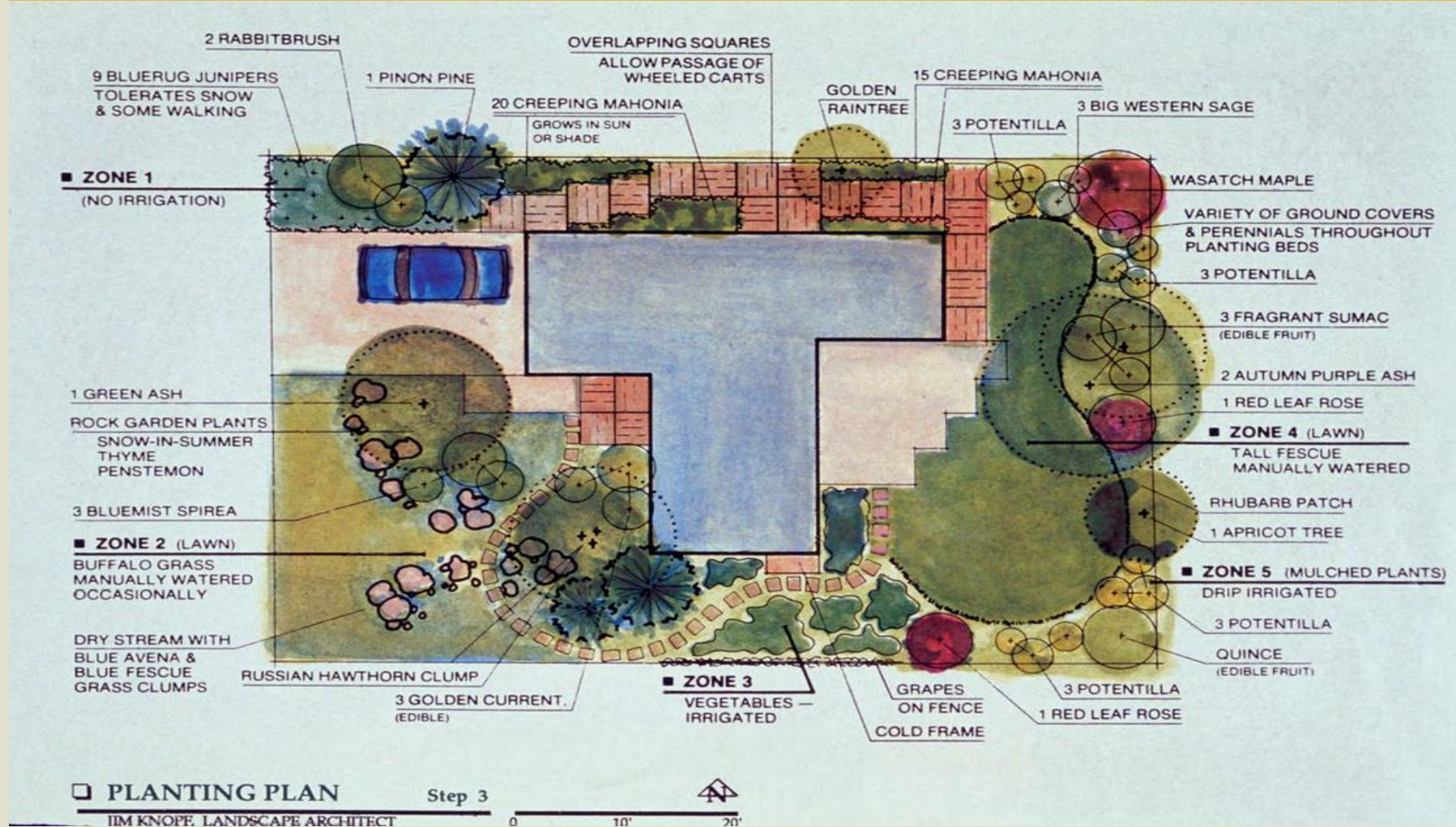
Definition: XeriScape, LocalScape, Waterwise

**XERISCAPE = Water
wise Landscaping =
LocalScape**

- Xeric (Dry) Scape
(Vista) Pronounced
(Zeriscape)
- LocalScape – Selection
of plants suited for your
local environment

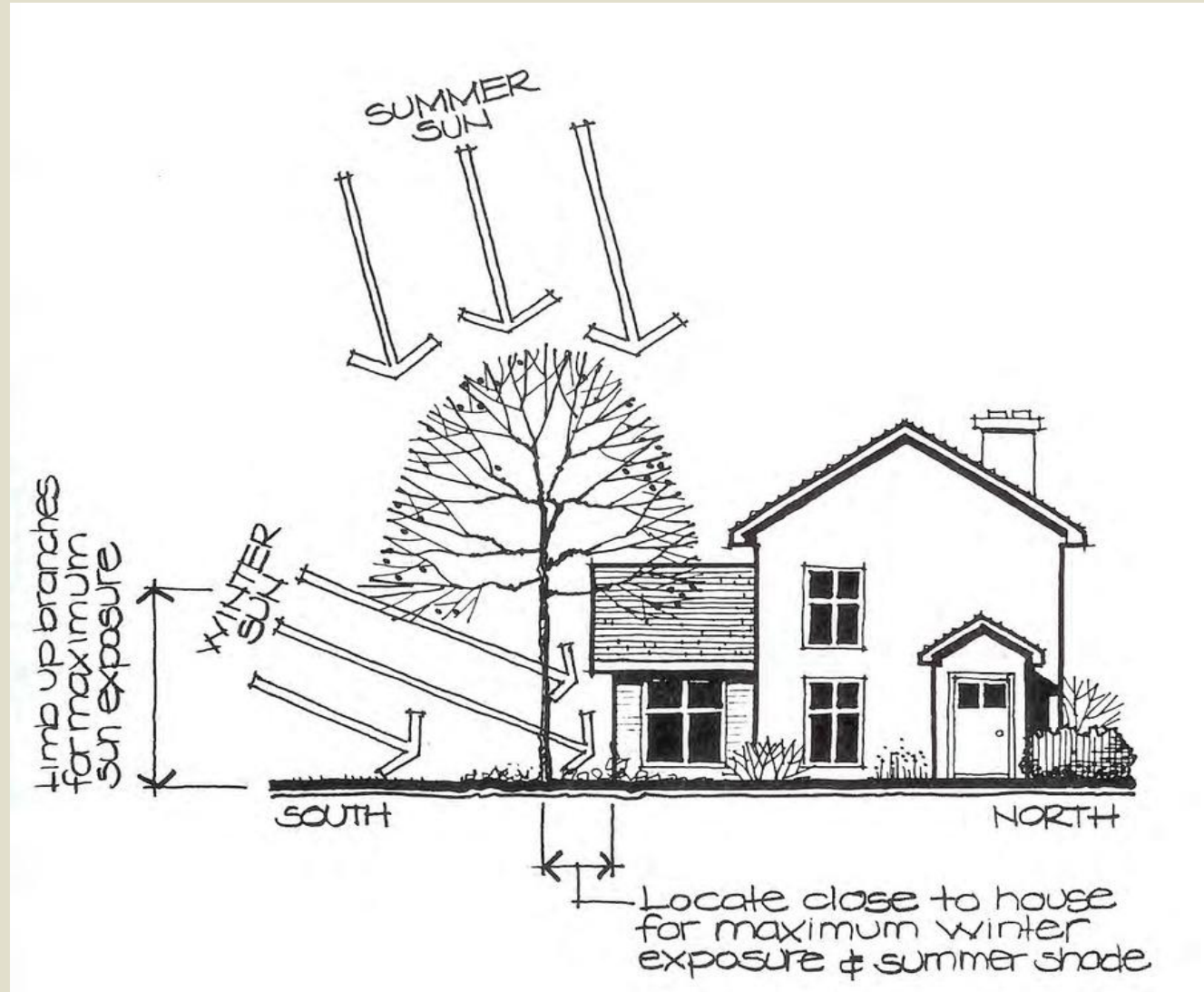


Seven (7) Xeriscape Principles



1. Plan & Design

1.Planning & Design



Site Analysis

2. Analyze Soil

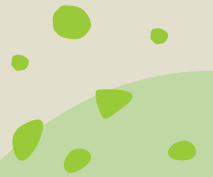
Use a Shovel or a
Soil Probe

Soil Type

Drainage
Capability



3. Practical Lawn Areas



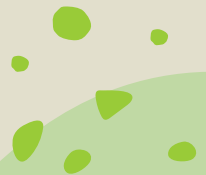
4. Hydrozone

What is Hydrozone?

Hydor zoning is the practice of clustering together plants with similar water requirements in effort to conserve water.

Group plants together according to water use

- VERY LOW – water use zone
- LOW – water use zone
- MODERATE – water use zone
- HIGH – water use zone



4. Hydrozone



Very little to no water annually in this park strip.

- Use properly designed systems
- Don't waste water!
- Don't over water!!

- *Linum lewisii*, 'Lewis' Blue Flax
- *Iris Germanica*, Iris Mix
- *Penstemon eatonii*, 'Firecracker' Penstemon
- *Gaillardia pinnatifolia* 'Hopi', *Hopi Blanket Flower*
- *Penstemon digitalis*, 'Dark Towers' *Beardtongue*



Photo by Lauren Springer

Be Bold!

- **Some plants will work; others will not.**
- **Don't be afraid to try.**
- **Road Salt**
- **Type of irrigation**
- **City Ordinances**
- **Height restrictions**
- **Mulch?**
- **Poisonous plants**

- Antennaria dioica, Pink Pussytoes
- Dianthus deltoides 'Vampire'
- Dianthus hybrid Star Series 'Neon Star'
- Dianthus gratianopolitanus 'FireWitch (Feuerhexe)'
- Penstemon barbatus 'Elfin Pink'
- Salvia nemorosa 'May Night (Mainacht)', Meadow Sage

5. Use Mulch



- Conserve Moisture
- Reduce Weeds
- Inorganic Mulch - Pea Gravel
- Organic Mulch - Bark/Woodchips

Very Low & Low Water-use Zones

- **Armeria** juniperifolia 'Dwarf Thrift
- **Yucca** filamentosa 'Bright Edge' *Adam's Needle'*
- **Dianthus** hybrid Everlast Series 'Raspberry Cream'

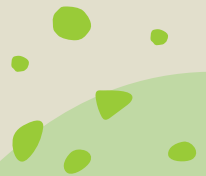
6. Water Wisely

- Even water wise plants need water until they are established (1st season)
- Be careful not to over-water
- Use a well-designed drip irrigation system

Aquilegia barnebyi 'BarneyB.' *Oil Shale Columbine*

Penstemon cyananthus 'Wasatch' *Wasatch Beardtongue*

Sedum acre 'Utah (Yellow Stonecrop)' *Creeping Stonecrop*



7. Appropriate Maintenance



Leymus cinereus 'Great Basin' *Wildrye*



Pulmonaria hybrid 'Trevi Fountain' *Lungwort*

- Different Maintenance than Lawn
- Spring Weed Control
- Summer Deadheading
- Fall Pruning & Cleanup
- Less time annually than on lawn

Landscaping Tips

Make it fun with different color schemes

- Soft, quiet and soothing
- Bright, warm and energetic
- Plant for all seasons
- Plant for foliage color only

Whatever **YOU** like!

Hosta hybrid 'White Feather'

Sempervivum hybrid Chick Charms 'Gold Nugget'

Sphaeralcea grossularifolia *Gooseberryleaf*

Globemallow



Experiment

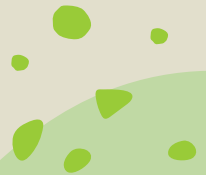


Plants will Surprise You

- Most perennials are low water users compared to sod
- Experiment and don't be afraid to fail
- Plant for foliage texture along with color in both bloom and foliage

Lamiastrum galeobdolon 'Herman's Pride'

- Great foliage color
- Spring blooming
- Zone 3 Full shade to part sun Great for dry shade



Perennials don't have to bloom...

Artemisia hybrid 'Powis Castle'

- Zone 4, low to no watering



Heuchera Northern Exposure Purple Coral Bells

- Zone 3, dry shade



Sempervivum hybrid Chick Charms 'Gold Nugget'



Sempervivum hybrid Chick Charms 'Cherries Jubilee'



Sempervivum hybrid Chick Charms Giant 'Gold Rush'



Sempervivum hybrid Chick Charms 'Autumn Apple'



Perennial Ornamental Grasses

Festuca ovina 'Eilers Beauty' *Fescue*

- Cool Season
- Zone 3
- Full sun or full shade
- Great for dry shade



Bouteloua gracilis 'Zig Zag' *Blue Grama*

- Warm Season
- Zone 3
- Full sun
- Small and unique
blooms





Leymus cinereus 'Great Basin' *Wildrye*

- Zone 2
- Full sun
- 48-72" tall
- No water needed once established



Leymus salinus 'Basin Junior'

- Zone 3
- Full Sun
- 24-36" tall
- No water needed once established



- **Iris pallida**'Aureo Variegata' *Golden Variegated Sweet Iris*
- **Anemone sylvestris**
'Snowdrops (Sylvestris Pasqueflower)'
Snowdrops Windflower
- **Aubrieta** hybrid Axcnt Series' Deep Purple'
Rockcress
- **Dianthus** hybrid Everlast Series
'Raspberry Cream'



Spring Blooming Ground Covers

- Creeping Thyme
- Rock Cress
- Creeping Speedwell



Under Used Ground Covers

Sedum hybrid Sunsparkler Series 'Blue Elf'

Sedum hybrid Sunsparkler Series 'Lime Zinger'

Sedum hybrid Sunsparkler Series 'Wildfire'

Ceratostigma plumbaginoides 'Plumbago'

Aethionema schistosum 'Persian Stonecress'





Sedum spathulifolium 'Cape Blanco'

- Great groundcover
- Zone 3
- Full sun
- Very little water needed once established



Sedum globosum 'Old Man Bones'

- Great groundcover
- Zone 3
- Full sun
- Little to no water needed once established



Helleborus hybrid 'Spring Promise Conny'

Christmas Rose

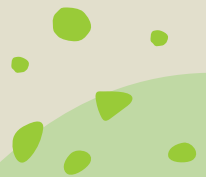
- Very Early Spring
- Zone 5
- Full & part shade
- Little water needed once established



Helleborus x hybridus Mardi Gras Series

'Apricot Shades' *Lenten Rose*

- Very Early Spring
- Zone 5
- Full & part shade
- Little water needed once established



Geranium cantabrigiense 'Karmina'

Cranesbill

Saxifraga arendsii Marto Series 'Red'

Rockfoil

Iberis sempervirens 'Whiteout'

Candytuft

Saxifraga arendsii Marto Series Hot Rose'

Rockfoil

Great early spring color and combinations. These will be some of the earliest color in your garden. Saxifraga's are shorter lived only last 3-5 years



Other new Perennials

Solidago multiradiata 'Cassia Gold' Dwarf

Goldenrod



Ajuga hybrid Feathered Friends Series

'Cordial Canary'



Dianthus hybrid 'Kahori'

Very long bloom time With trimming will bloom entire growing season.

Without trimming blooms will be intermittent but still have color.

Zone 3

Height 6-8 In.





Phlox subulata 'Violet Pinwheels'

- Early Spring bloomer
- Zone 4
- Full sun to part shade
- Little water needed once established



Pulsatilla vulgaris *Pasque Flower*

- Very early spring bloomer
- Attractive seeds heads through summer Zone 3
- Full sun to part shade
- Little water needed once established

Paeonia itoh 'Bartzella' *Itoh Peony* (double yellow)

Paeonia lactiflora 'Coral Charm' (pink, semi-double)

- Spring bloomer
- Zone 3
- Full sun to part shade
- Unique color
- Great as cuttings



Geum triflorum 'Prairie Smoke'

Prairie Smoke Old Man's Whiskers

Bloom



Seed



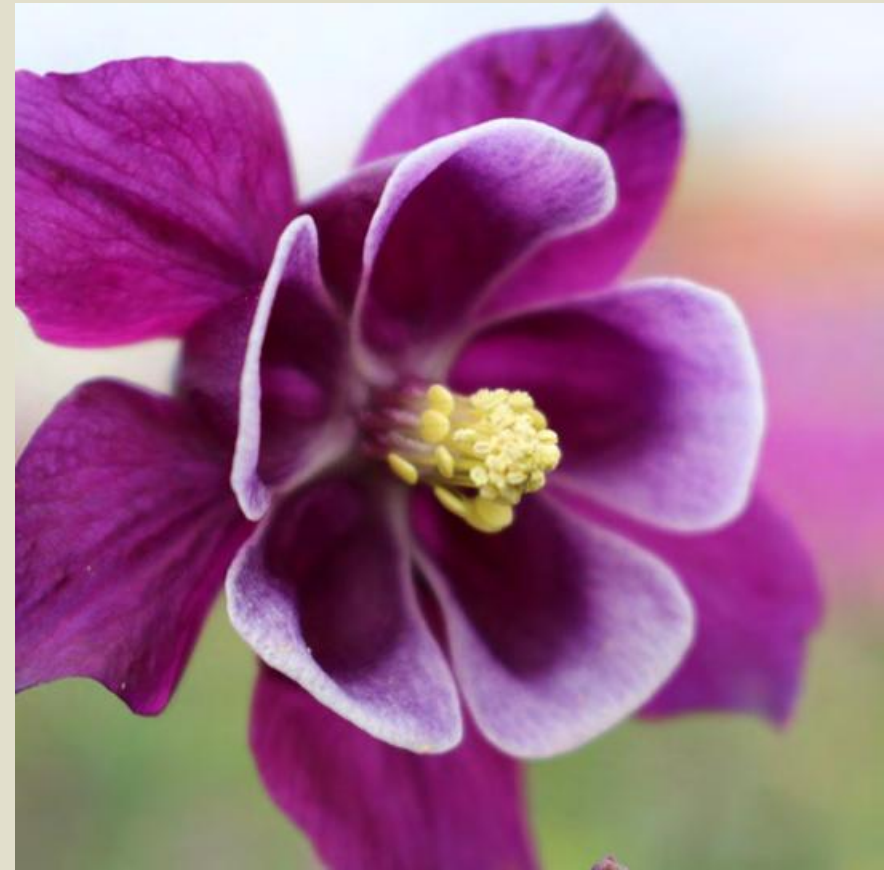
Marrubium rotundifolium 'Silverheels'

Horehound

- Drought tolerant
- Deer resistant
- Zone 4a
- Can handle moist soil, dry soil & clay-soil
- Full sun
- Can grow in part sun



Aquilegia caerulea Earlybird Series *Columbine*





Armeria maritima 'Splendens' *Thrift*

- Spring bloomer
- Summer seed heads
- Zone 3
- Full sun
- Little to no water needed once established



Pteroccephalus depressus *Moroccan Pincushion Flower*

- Spring bloomer
- Summer seed heads
- Zone 5
- Full sun
- Little to no water needed once established

Salvia nemorosa 'Caradonna' Meadow Sage
'April Night' Meadow Sage
Marvel Series 'Rose Marvel' Meadow Sage

-
- Rigid & upright habit
 - Dark purple stems w/violet-blue blooms
 - Re-blooms very well





Carex oshimensis 'Ice Cream' Sedge

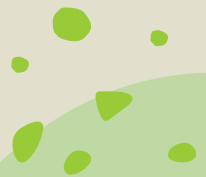
Full Sun – Full Shade

Deer Resistant

Handles all soil types

Can handle lots of water – or not much at all

Zone 5a – Evergreen!





Artemisia schmidtiana 'Nana'
SilverMound

- Foliage perennial (no blooms)
- Zone 4
- Full sun
- Very little water needed



Campanula carpatica 'Rapido Blue'

- Spring bloomer
- Summer seed heads
- Zone 3
- Full sun
- Low water needed once established



Tetraeneuris (Hymenoxys) acaulis var.
arizonica 'Sol Dancer'

- Discovered on the Wasatch Front
- Late Spring through Fall bloomer
- Zone 3
- Full sun
- Little to no water needed once established



Alyssum wulfenianum 'Golden Spring (Aurinia)'
Madwort

- Spring bloomer
- Minor reseeding
- Zone 4
- Full sun to part shade



Sphaeralcea munroana 'Munro'
Munro Globemallow

- Utah native
- May bloomer
- Zone 4
- 8-30" in height (depending on water)
- Full sun
- Little to no water needed once established



Tanacetum densum 'Partridge Feather'
Partridge Feather

- Spring bloomer
- Minor reseeding
- Zone 4
- Full sun to part shade
- Plant Select



Achillea Peter Cotton Tail

- Spring bloomer
- Easy low maintenance
- Great pollinator
- Zone 3
- Full sun, great in a park strip
- Little to no water needed once established



Achillea ageratifolia *Greek Yarrow*

- Early Summer bloomer
- Great groundcover
- Great pollinator
- Zone 4
- Full sun to part shade
- Little to no water needed once established



Lavandula hybrid *intermedia* 'Phenomenal'

- Very long bloom time (Spring-summer)
- Great pollinator Zone 5 Full
- sun Very little water needed
- once established
-



Viola corsica'Corsican'*Corsican Violet*

- Spring and fall bloomer Zone 4
- Full sun to full shade Little to no
- water needed once established
- Will reseed and naturalize in the
- garden

Salvia dorrii 'Desert' Desert Sage

- Bright silver foliage Bright purple
- flowers Seed heads stay golden
- brown after bloom
- Height 18-24 in.
- Low water
- Pollinator
- Highly Aromatic/Deer resistant
- Zone 5



In Conclusion

Have fun!

Save water!

Love Plants!

Enjoy Your Yard!



Thank You!

**Class
Feedback**



WEBER BASIN WATER
**LEARNING
GARDEN**

**Monthly
Newsletter**

