



*Choosing the
“Right” Perennials*



PERENNIAL
FAVORITES



A large group of approximately 40 people, including men and women of various ages, are posed for a group photo in an outdoor setting. They are arranged in several rows, with some kneeling in the front and others standing behind. Many are wearing blue shirts or jackets, suggesting a team or company uniform. The background features a vast field of green plants, possibly a nursery or farm, with a large white greenhouse structure on the left. In the distance, there are rolling hills and mountains under a clear blue sky. A large, semi-transparent logo consisting of several overlapping diamond shapes is centered in the upper portion of the image. To the right of the logo, the text "PERENNIAL FAVORITES" is written in a large, white, serif font, with a vertical line separating the logo from the text.

PERENNIAL FAVORITES

*Celebrating 30
Years*



Perennial Favorites

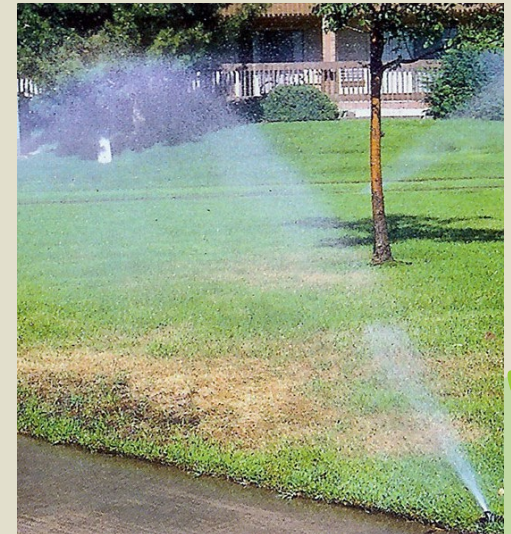
PERENNIAL FAVORITES
30th
anniversary





Why Conserve Water?

- Utah is the 2nd highest water user in the Nation
- Utah has the 2nd lowest amount of annual precipitation
- Water is a Limited Resource
- Current demand is outpacing supply
- Population growth will increase water demands
- Utahns use 293 gallons per person per day
- National average is 179 gallons



What Should We do?

ZeroScape?

XeriScape?

LocalScape?

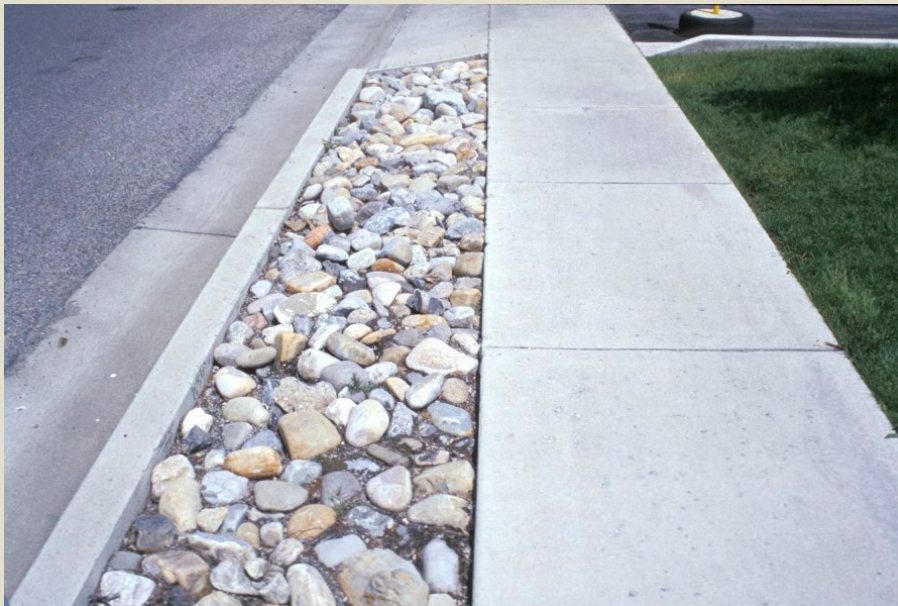
Water Wise Landscape?

Definition: ZeroScape

ZEROSCAPE = no scape

- Zero (none, nothing, empty...)
- Scape (Vista)
- Pronounced (Zeroscape)

A hot, dry landscape with a few prickly plants, lots of rocks and a few cow skulls...



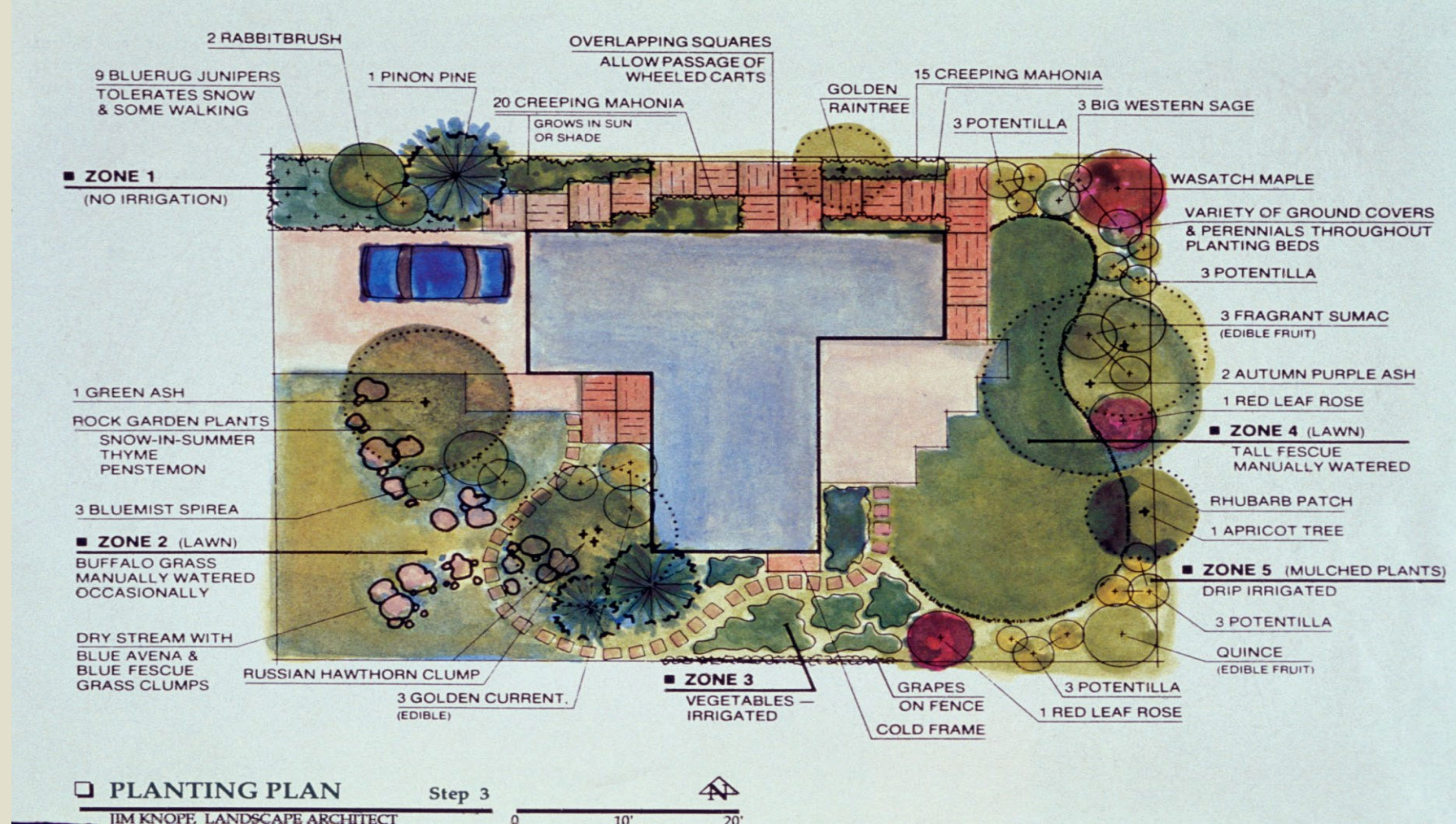
Definition: XeriScape, LocalScape, Waterwise

**XERISCAPE = Water
wise Landscaping =
LocalScape**

- Xeric (Dry) Scape
(Vista) Pronounced
(Zeriscape)
- LocalScape - Selection
of plants suited for your
local environment

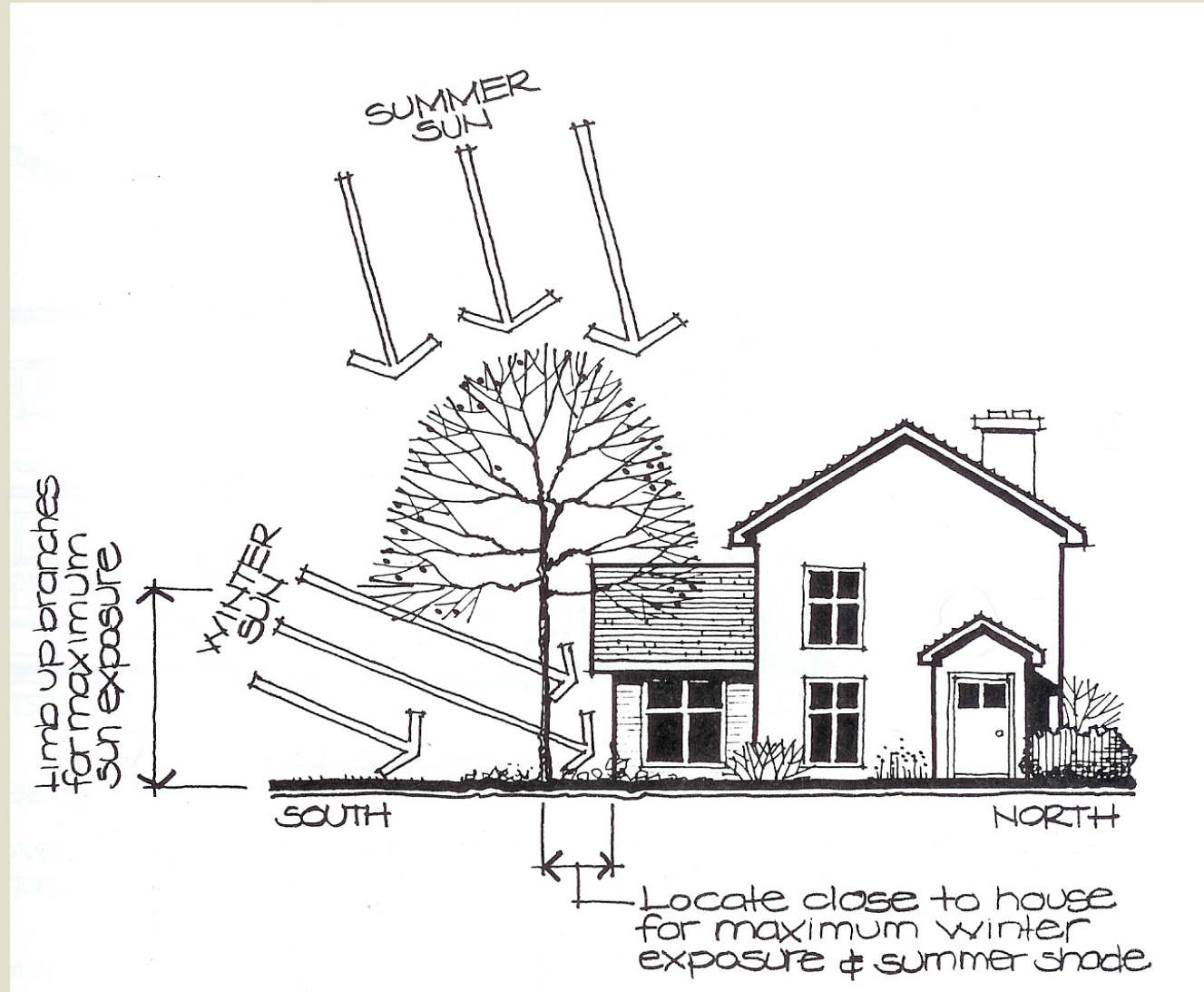


Seven (7) Xeriscape Principles



1. Plan & Design

1.Planning & Design



Site Analysis

2. Analyze Soil

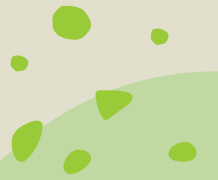
Use a Shovel or a
Soil Probe

Soil Type

Drainage
Capability



3. Practical Lawn Areas



4. Hydrozone



Low water use & drought tolerant plants

5. Use Mulch



- Conserve Moisture
- Reduce Weeds
- Inorganic Mulch - Pea Gravel
- Organic Mulch - Bark/Woodchips
- Very Low & Low Water-use Zones

6. Water Wisely

Even water wise plants need water until Establishment

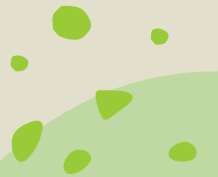
- Before 10 am and after 6 pm
- Use properly designed systems
- Don't waste water!
- Don't over water!!



7. Appropriate Maintenance



- Different Maintenance than Lawn
- Spring Weed Control
- Summer Deadheading
- Fall Pruning & Cleanup



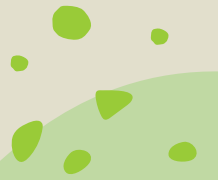
What is Hydrozone?

Hydrozoning is the practice of clustering together plants with similar water requirements in effort to conserve water.

Group plants together according to water use

- VERY LOW - water use zone
- LOW - water use zone
- MODERATE - water use zone
- HIGH - water use zone

Hydrozone/Water Wise Park Strips



Water Wise Park Strip



Photo by Lauren Springer

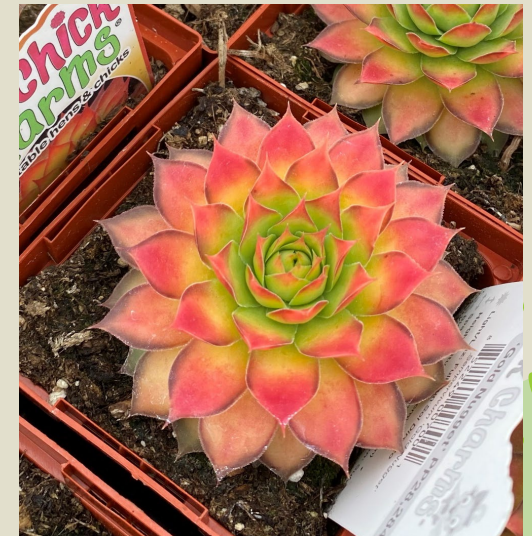
Be Bold!

- Some plants will work, others will not. Don't be afraid to try.
- Road Salt
- Type of irrigation
- City Ordinances
- Height restrictions
- Mulch?
- Poisonous plants

Landscaping Tips

Make it fun with different color schemes

- Soft, quiet and soothing
- Bright, warm and energetic
- Plant for all seasons
- Plant for foliage color only
- Whatever **YOU** like!



Experiment



Plants will Surprise You

- Most perennials are low water users compared to sod
- This park strip gets watered once a week from drips
- Photo taken first of August

Hibiscus hybrid 'Mars Madness'

Rudbeckia fulgida 'Goldsturm'

Calamagrostis acutiflora 'Karl Foerster'

Iris sibirica 'Blue King'

Geranium cantabrigiense 'Karmina'

Lavandula angustifolia 'Hidcote Blue'

Water Wise Park Strip



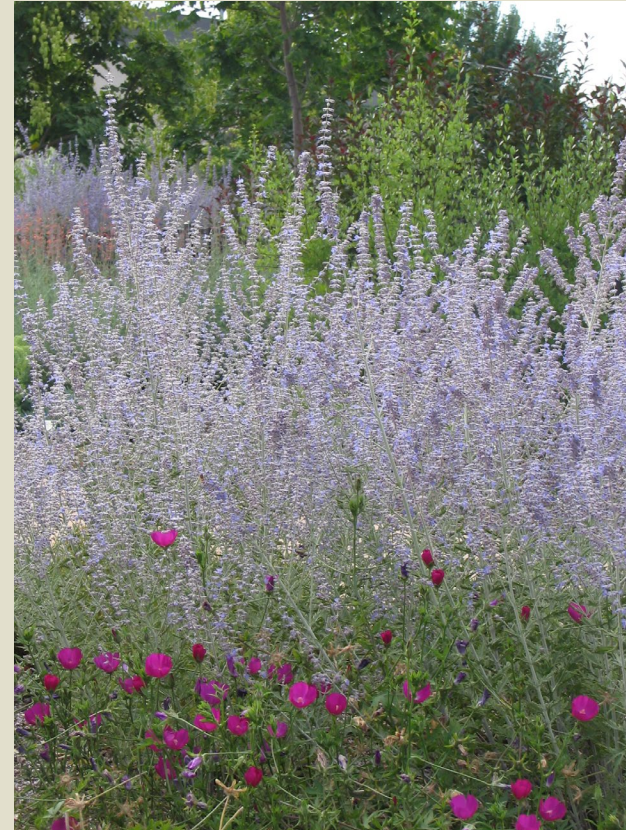
Bouteloua gracilis 'Blonde Ambition'
Calamagrostis acutiflora 'Eldorado'
Euphorbia martinii 'Ascot Rainbow'
Hemerocallis hybrid 'Pardon Me'
Achillea millefolium New Vintage Series 'Rose'
Salvia pachyphylla 'Mojave'

Favorite Perennials

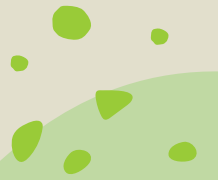
Artemisia hybrid 'Powis Castle'



Perovskia atriplicifolia 'Rocketman'
Callirhoe involucrata 'Prairie Winecups'



Rhus aromatica 'Gro Low' *Sumac*



Allium hybrid 'Millenium' Ornamental Onion



- Deer resistant / Pollinator
- Blooms July - late Sept.
- Can handle full sun to 70% shade
- Zone 4a
- Blooms last very long / slight smell of sweet onion

Allium senescens 'Blue Eddy' Ornamental Onion

- Deer resistant / Pollinator
- Blooms July - late Sept.
- Pink Shades with attractive seed heads
- Zone 4a
- Silver-Blue foliage
- Foliage Height 4-6 In.
- Flower Height 8-12 In.



Sedum hybrid 'Mr. Goodbud'



Sedum telephium Touchdown Series 'Teak'



Marrubium rotundifolium 'Silverheels'

Horehound

- Water-friendly variety / Drought tolerant
- Deer resistant
- Zone 4a
- Can handle moist soil, dry soil & clay-soil
- Does need full-sun for vigorous growth





Phlox subulata 'Violet Pinwheels'

- Early Spring bloomer
- Zone 4
- Full sun to part shade
- Little water needed once established



Pulsatilla vulgaris *Pasque Flower*

- Very early Spring bloomer
- Attractive seeds heads through summer
- Zone 3
- Full sun to part shade
- Little water needed once established

Geum triflorum 'Prairie Smoke'

Prairie Smoke Old Man's Whiskers

Bloom



Seed





Agastache hybrid Kudos Series 'Coral'

- Summer bloomer
- Great pollinator
- Zone 5
- Full sun to part shade
- Little water needed once established



Agastache hybrid Kudos Series 'Mandarin'

- Summer bloomer
- Great pollinator
- Zone 5
- Full sun to part shade
- Little water needed once established

Salvia dorrii 'Desert' Desert Sage

- Bright silver foliage
- Bright purple flowers
- Seed heads stay golden brown after bloom
- Height 18-24 in.
- Low water
- Pollinator
- Highly Aromatic/Deer resistant
- Zone 5





Sedum rupestre 'Prima Angelina'

- Winter foliage
- Late-Summer bloomer
- Grown for its foliage color
- Great pollinator
- Zone 4



Sedum rupestre 'Prima Angelina'

- Summer foliage
- Full sun
- Little to no water needed once established

Salvia nemorosa 'Caradonna' Meadow Sage

- Rigid & upright habit
- Dark purple stems w/violet-blue blooms
- Still attractive when past-bloom!
- Not prone to wind-damage (unlike Mainacht)
- Re-blooms very well



Dianthus hybrid 'Kahori'

- Very long bloom time
- With trimming will bloom entire growing season
- Without trimming blooms will be intermittent but still have color.
- Zone 3
- Height 6-8 In.



Under Used Ground Covers

Sedum hybrid Sunsparkler Series 'Blue Elf'

Sedum hybrid Sunsparkler Series 'Lime
Zinger'

Sedum hybrid Sunsparkler Series 'Wildfire'

Ceratostigma plumbaginoides 'Plumbago'

Aethionema schistosum 'Persian
Stonecress'





Ceratostigma plumbaginoides 'Plumbago'

- Summer bloomer
- Bright red fall foliage
- Zone 5
- Full sun or shade
- Very little water needed



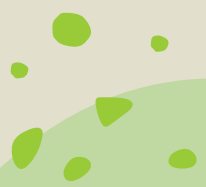
Echinacea hybrid 'Cheyenne Spirit'

- Summer bloomer
- Blooms can be orange/red/yellow/purple/cream
- Zone 4
- Full sun
- Very little water needed once established



Zauschneria latifolia
'PF Exclusive Woody's
Peach Surprise'
Epilobium

Zauschneria canum
'Wright Lake Road'
Epilobium





Zauschneria canum 'Summer Snow'

- Summer bloomer
- Bright red fall foliage
- Zone 5
- Full sun
- Very little water needed



Pteroccephalus depressus

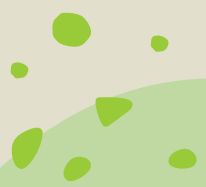
Moroccan Pincushion Flower

- Spring bloomer
- Summer seed heads
- Zone 5
- Full sun
- Little to no water needed once established



Carex oshimensis 'Ice Cream' Sedge

- Full Sun – Full Shade
- Deer Resistant
- Handles all soil well
- Can handle lots of water – or not much at all
- Zone 5a – Evergreen!





Artemisia schmidtiana 'Nana'

Silver Mound

- Foliage perennial (no blooms)
- Zone 4
- Full sun
- Very little water needed



Campanula carpatica 'Rapido Blue'

- Spring bloomer
- Summer seed heads
- Zone 3
- Full sun
- Low water needed once established



Tetraneuris (Hymenoxys) acaulis var. arizonica 'Sol Dancer'

- Discovered on the Wasatch Front
- Late Spring through Fall bloomer
- Zone 3
- Full sun
- Little to no water needed once established



Linum perenne 'Sapphire'

- Spring bloomer
- Minor reseeding
- Zone 3
- Full sun
- Little to no water needed once established

Zinnia grandiflora *Prairie Zinnia*

- Bright yellow blooms
(June through October)
- Loves hot dry
conditions
- Only plant with good
drainage
- Height 3-4 in.
- Spread 12-15 in.
- Great Pollinator
- Deer and Rabbit
Resistant



Panicum virgatum 'Shenandoah'

Switch Grass

Summer



Fall



Andropogon gerardii
'Rain Dance' Big
Bluestem

Green foliage with red tips
in the summer

Maroon flowers

Fall color turns to deep
shades of red and purple

Tight upright habit

Height 60-72 in.

Zone 3





Monarda didyma Balmy Series 'Rose'

- Summer bloomer
- Great pollinator
- Zone 6
- Full sun
- Little water needed once established



Achillea ageratifolia *Greek Yarrow*

- Early Summer bloomer
- Great groundcover
- Great pollinator
- Zone 4
- Full sun to part shade
- Little to no water needed once established



Buddleia hybrid Buzz Series 'Purple'

Butterfly Bush

- Very long bloom time (Spring-summer)
- Great pollinator
- Zone 4
- Full sun
- 36-60" tall
- Very little water needed once established



Iliamna rivularis *Maple Mallow*

- Early Summer bloomer
- Summer seed heads
- Zone 3
- Full sun to part shade
- Little to no water needed once established



Lavandula hybrid *intermedia* 'Phenomenal'

- Very long bloom time (Spring-summer)
- Great pollinator
- Zone 5
- Full sun
- Very little water needed once established



Lilium hybrid Asiatic Matrixline Series
'Matrixline Mix'

- Summer bloomer
- Summer seed heads
- Zone 3
- Full sun to part shade
- Little to no water needed once established



Sedum spathulifolium 'Cape Blanco'

- Great groundcover
- Zone 3
- Full sun
- Very little water needed once established



Sedum globosum 'Old Man Bones'

- Great groundcover
- Zone 3
- Full sun
- Little to no water needed once established



Leymus cinereus 'Great Basin' Wildrye

- Zone 2
- Full sun
- 48-72" tall
- No water needed once established



Leymus salinus 'Basin Junior'

- Zone 3
- Full Sun
- 24-36" tall
- No water needed once established



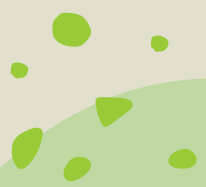
Sporobolus wrightii 'Windbreaker'

- Spring
- Zone 4
- Full sun



Sporobolus wrightii 'Windbreaker'

- Fall Color
- Little to no water needed once established



Sorghastrum *nutans* 'Thin Man'

Indian Grass

- Plant Select
- Blue Foliage
- Bright golden yellow "Wheat Like" Flowers/Seed Heads
- Narrow upright habit
- Height 60-72 in.
- Zone 4
- Rival any **Calamagrostis** acutiflora 'Karl Foerster





SAGE Salvia officinalis 'Berggarten' Gray Leaf Garden Sage

- Drought tolerant
- Easy to grow
- Edible/Deer resistant
- Height 16-24 in.
- Blooms purple in summer
- Foliage has a purple cast in fall
- Great landscape or container plant
- Zone 5b

In Conclusion

Have fun!

Save water!

Love Plants!

Enjoy Your Yard!

