



SUMMARY OF OPERATIONS 2025



ZEKE BARDWELL



JORDAN CLONTZ

TABLE OF CONTENTS

Board of Trustees.....	1	Honoring Our Employees.....	21-22
Weber Basin Water Service Area Map.....	2	Finance & Economics.....	23-24
District Staff.....	3-6	Planning for the Future.....	25-26
District 75 Year History.....	7-8	By the Numbers.....	27
District Accomplishments.....	9	Total Water Sales.....	28
District Projects.....	10-18	Data & Tables.....	29-36
Watershed Tour.....	19-20		

BOARD OF TRUSTEES



ANGIE OSGUTHORPE
Chair, Weber County



KYM O. BUTTSCHARDT
Weber County



PAUL C. SUMMERS
Davis County



SCOTT K. JENKINS
Weber County



JARED ANDERSEN
Morgan County



MARK D. ANDERSON
Davis County



CHRIS ROBINSON
Summit County



GAGE FROERER
Weber County



BOB STEVENSON
Davis County

The Governor of the State of Utah receives recommendations from the County Commissions and appoints trustees who are then confirmed by the Utah State Senate. The Board appoints a General Manager who serves as the Chief Executive Officer of the District.

SERVICE AREA MAP

THE DISTRICT SUPPLIES WATER TO FIVE COUNTIES:

Davis, Weber, Morgan, Summit, & Box Elder

PROVIDING FIVE CATEGORIES OF WATER TO ITS CUSTOMERS:

Wholesale & Retail
 Secondary Irrigation,
 Wholesale & Retail
 Agriculture Irrigation,
 Groundwater Replacement,
 Treated Municipal & Industrial,
 and Untreated Municipal & Industrial



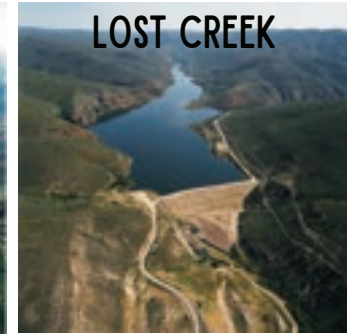
CAUSEY



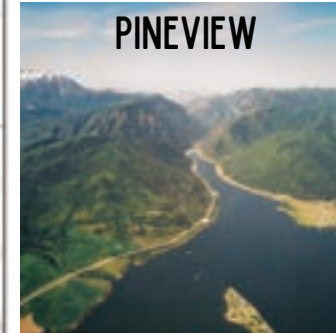
EAST CANYON



ECHO



LOST CREEK



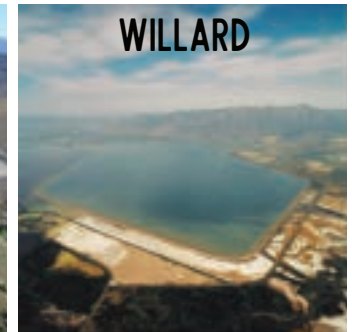
PINEVIEW



SMITH & MOREHOUSE



WANSHIP



WILLARD

The District operates seven large storage reservoirs, three hydro-power generation plants, twenty-one wells, four water treatment plants, & hundreds of miles of canals, tunnels, aqueducts, & pipelines.

EXECUTIVES

SARA SMITH



SCOTT W. PAXMAN, PE
General Manager
Chief Executive Officer



DARREN E. HESS, PE
Assistant General Manager
Chief Operations Officer



JON F. PARRY, PE
Assistant General Manager
Strategic Initiatives



BRAD D. NELSON, PE
Assistant General Manager
Chief Technical Officer

MANAGERS



CALYSTA BRAVO
Finance Manager



JOSH HOGGE, PE
Municipal & Industrial Water Manager



SHANE MCFARLAND, PE
Engineering Manager



RILEY OLSEN, PE
Water Supply & Power Manager



GREG PIERCE
Information Services Manager



KENDALL SEARLE
Administration Manager/CAO



SAM SORENSEN, PE
Construction & Maintenance Manager



KATHY WOOD, SPHR
Human Resources Manager

DISTRICT STAFF

ADMINISTRATION

Suzy Eppens	Contracts Administrator
Deena Harris	Customer Service Specialist
Linsay Hartman	Administrative Specialist
Brittnii Hess	Purchasing Assistant & Records Management
Makenzie Matthews	Records Administrator & Contracts Technician
Sara Smith	Customer Service Specialist
Sean Valeika	Courier

CONSERVATION

David Rice	Conservation Division Manager
Susan Bangerter	Media & Events Coordinator
Lucy Gelb	Conservation Program Analyst
Helen Muntz	Learning Garden & Education Lead
Zachary Roberts	Conservation Coordinator

CONSTRUCTION & MAINTENANCE

Jordan Clontz	Construction & Maintenance Superintendent
Jacob Amlin	Construction & Maintenance Crew
Carson Bennett	Construction & Maintenance Crew
Steven Brown	Inventory & Asset Specialist
Kolt Douglas	Crew Chief
Carson Farrell	Crew Chief
Jake Kearsley	Construction & Maintenance Crew
Connor Nelson	Construction Mechanic
Tyke Nelson	Construction & Maintenance Crew
Tanner Obray	Certified Welder
Colby Pearson	Construction & Maintenance Crew
Trase Penman	Crew Chief
Kanean Roberts	Construction & Maintenance Crew
Connor Robison	Facilities Tech
Austin Rose	Facilities Tech
Noah Rose	Construction & Maintenance Crew/ROW
Scott Wilson	Crew Chief

ELECTRICIANS

David Giles	Lead Electrician
Jordan Hendrix	Electrician
Lex Shaw	Electrician
Kenneth Turner	Lead Electrician

ENGINEERING

Zeke Bardwell	Construction Inspection Supervisor
Stephen Dellermann	Electrical Engineer
Octavious Dickerson	Engineering Tech
Vincent Hamilton, PE	Senior Engineer
Matthew Meier, PE	Staff Engineer
Marc Montgomery	Inspector
Jesse Moreno, PE	Staff Engineer
Nathan Page, PE	Staff Engineer

FINANCE

Brittney Bateman, CGFM	Financial Analyst
Marisol Martinez	Accounting Coordinator

INFORMATION SYSTEMS

Michael Alverson	Systems Administrator
Alex Baldwin	Application Developer
Myckaela Hammon	GIS Specialist
Danielle Lopez	Application Developer Intern
Jay Seastrand	SCADA & Security Specialist
Talon Thurgood	SCADA & Security Specialist
Thomas Waite	Application Developer

DISTRICT STAFF



RILEY OLSEN

MUNICIPAL & INDUSTRIAL WATER

Jeff Connor	Treatment Operations Supervisor
Nathan Allison	WTP Operator
Gordon Barrow	M&I Distribution Operator
Alonzo Castro	WTP Operator
Nathan Frew	WTP Manager– Davis North
Kevin Green	WTP Manager– Weber South
Thomas Hamblin	WTP Operator
Geoffrey Howell	WTP Operator
Anders Hubbard	M&I Maintenance
Larry Hubbard	WTP Operator
John Jacobson	WTP Operator
Tyler Jensen	WTP Operator
James Jewett	WTP Operator
Lee Jones	WTP Operator
Paul Kiesz	M&I Maintenance
Joshua Kite	M&I Distribution Operator
Shay Larsen	WTP Operator
Rex Lee	Solids Handling Specialist
Harrison Lilly	WTP Operator
Garrett Maddux	WTP Operator
Jordan Mounteer	WTP Operator
Aaron Pearce	WTP Operator
Janice Sachun	WTP Operator
Ian Smith	WTP Operator
Mitchell Sorenson	WTP Manager– Davis South
Paul Spens	M&I Distribution Operator, Lead
Anthony VanSteenwyk	WTP Operator
Dillon Walton	WTP Operator

LABORATORY

Jason Kim	Lab Director & Water Quality Manager
Zachary Bons	Chemist
Nadja Borges	Chemist
Kelly Holmes	Chemist

TOUR GUIDES

Amy Benning	Sherlyn Hilton
Laurie Falslev	Corinne Hoffmann
Emily Floyd	Michelle Pierce

WATER SUPPLY & POWER

Jason Obray	Water Supply & Power Superintendent
Kevin Case	Irrigation Operator
Casey Folkman	Irrigation Operator & Dam Tender
Tracy Hess	Irrigation Operator & Dam Tender
Jeff King	Hydropower Plant Operator & Dam Tender
Andy Mack	Irrigation Operator
Chad Montgomery	Hydropower Plant Operator & Dam Tender
Adam Moulding	Irrigation Operator
Joseph Peterson	Irrigation Operator
Thomas Rhoades	Irrigation Operator
Kenny Schow	Hydropower Plant Operator & Dam Tender
Lee Smith	Irrigation Operator
Shane Visser	Irrigation Operator
Bob Waldron	Hydropower Plant Operator & Dam Tender

DISTRICT HISTORY

THEN *and* NOW

4	Counties Served	5
26	Employees	106
0	Hydro Power Plants	3
6	Major Reservoirs	7
21	Miles of Pipe	584
0	Water Treatment Plants	4

1950

The Water District was created to act as the local sponsor of the federal project and to further supply water resources in the Weber & Ogden drainages



1950-1957

3 Water Treatment Plants, Gateway Canal & Tunnel, Weber & Davis Aqueduct, Pineview Dam Enlargement, and Rockport Reservoir



1958-1967

Gateway & Wanship, Hydropower Plants, Willard Bay & Canal, Causey Reservoir, Lost Creek Reservoir, East Canyon Reservoir



1968-2002

Smith & Morehouse Reservoir, Causey Hydropower Plant, Secondary Pipelines, Pumping Stations, Underground Water Wells, and Aquifer Storage



2002-TODAY

The District continues to meet the needs and growth through water conservation and expanding infrastructure



CELEBRATING 75 YEARS



MESSAGE FROM GENERAL MANAGER SCOTT PAXMAN

This year the District celebrated the 75th anniversary of its creation. The District was established on June 26, 1950, by a decree of the Second District Court. To celebrate this milestone, a lunch was held with many of the District's partners. Commemorative coins and mugs were gifted, and banners were displayed showing photos of some of the early history of the District.

There have been incredible changes during the past 75 years. It was amazing to know that the District's first Board of Directors were personally involved in getting the District started, including acquiring rights of way and properties for pipelines, pumpstations and water treatment plants, etc. Securing loans to finance these purchases, as well as the construction of many facilities, was also very challenging and important. The population of the District increased from just under 150,000 in 1950 to over 750,000 in 2025.

With the limited water supply and the aging infrastructure, the District's current staff and Board of Trustees have also been facing many challenges. More emphasis has been placed on conserving and extending the existing water supply for the growing population, as well as replacing some major aging infrastructure, such as aqueducts, pipelines, pump stations, wells and water treatment plants, so that this precious water can continue to flow to our customers.

The District is starting the design of a new water treatment facility in West Weber County. This expansion will address the growing water needs in the area. The cost of these needed facilities has been astonishing and has challenged staff and the Board to address affordability and scope reduction.

It is a pleasure to work with a supportive Board and dedicated staff. We are grateful for our relationships with our partner agencies and look forward to working closely with each of them. I would like to recognize those who have contributed to this report and thank the Board and the employees for their dedication to this work. Together we can accomplish remarkable things.



Mr. Paxman has worked for Weber Basin Water Conservancy District for over 35 years & in the water industry for over 40. He is a registered professional engineer, has been the General Manager/CEO of the District for 4 years, & received the Employee of the Year Award in 2025.

DISTRICT ACCOMPLISHMENTS



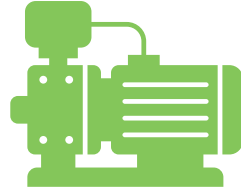
2

New Dump Trucks



13

Successful Inspections of
Critical Infrastructure



15

Irrigation Pumps Tore Down,
Inspected, & Repaired



22

Remote Site Cameras
Installed



24

Large Scale
Construction Projects



138

Sites Secured &
Monitored



Community Service Award
from Utah Nursery &
Landscape Association



Davis Aqueduct Reach 1
Most Outstanding Project in Water
from Utah Construction & Design



Davis Aqueduct Reach 1
Grand Award in Water Resource
from ACEC Utah



\$19 Million
Worth of Completed Projects



452

Water Service Activations
Processed



31,293

Active
Water Contracts



3,246

Customer Service Orders
Entered



1,536

Workorders Entered



1

Military Deployment



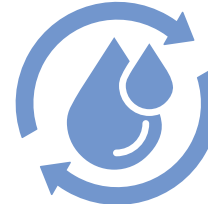
1

HVAC Field Controller
Certificate



1

Bachelors in
Construction Management



1

Grade IV Water
Treatment Certificate



3

CDL Licenses



1

Professional Engineer (PE)
License

CAPITAL PROJECTS



WEBER SOUTH 5 MG TANK

The 5 million gallon concrete water tank was put into service at the Weber South Water Treatment Plant. The 200' x 152' rectangular concrete tank, storing up to 5 million gallons, replaced an existing 1 million gallon tank that had reached its useful life. This tank is phase 1 of a larger plan to construct two 5 million gallon tanks on the treatment plant site. The tank was constructed by ProBuild Construction.

WEBER SOUTH WELL #2

The South Weber Well #2 is part of the original Bureau of Reclamation Project built in 1963 to provide culinary water to the surrounding areas. It has gone through several upgrades since its original construction, including a well house around the booster pump, a surge control valve, and chlorine dosing systems. It was originally constructed to pump at a capacity of 10 cfs, but the District has experienced a decrease in capacity over the years. The South Weber Well rebuild project will improve the overall capacity of the well and provide system optimization allowing for greater operational flexibility.



CAPITAL PROJECTS

COMPLETION OF DAVIS AQUEDUCT REACH 1



The Davis Aqueduct Parallel Pipeline completed construction of the 72" welded steel line, Military Springs pumpstation, and the Davis Aqueduct pumpstation adjacent to Hwy 89. With the completion of these milestone items, the pipeline is water ready, and provide the Wasatch Front with seismic readiness and growth.

LITTLE MOUNTAIN TANK



The Little Mountain Tank project replaced the existing 1.0 MG steel tank with a new 4.5 MG concrete tank. Through a coordinated effort, more than 2,000 cubic yards of concrete were placed and reinforced with rebar and post-tensioned cables to enhance seismic resilience. Additionally, 52 internal columns were constructed to provide increased structural support. The project is currently in the final stages of commissioning and will significantly improve service reliability for the District's customers to the west.

CAPITAL PROJECTS

12TH STREET CULINARY PIPELINE UPGRADE

The District partnered with Weber County to upgrade a key culinary waterline in coordination with roadway reconstruction and widening efforts. Completed between September 2024 and July 2025, this project included installation of 8,100 feet of 30" DR-18 C900 PVC pipe to replace aging 16" Shotecote pipe. This project is a prime example of joint infrastructure improvement projects aimed at minimizing costs and reducing service disruptions to the community. It is anticipated that similar partnerships will be pursued in the future as development, such as the Inland Port, necessitates additional infrastructure and improvements.



AV WATKINS SIPHON REPLACEMENT

The AV Watkins Siphon Replacement Project progressed from design into construction in 2025 to address insufficient siphons near the southwest corner of Willard Bay Reservoir. The work involved removing a portion of the dam embankment to install a concrete-encased, steel, low-level outlet pipe and intake structure, followed by reconstruction of the embankment above the new outlet. The embankment has been restored to support normal reservoir operations, and the project is now in its final stages.



DISTRICT OPERATIONS



DNWTP OZONE PIPING REPLACEMENT

The ozone system at Davis North Water Treatment Plant was installed in 2001. Over the 20+ years of operation, the welded stainless steel piping that carried ozonated water to the ozone contactors began to leak in several locations. The welded joints were typically where leaks began to occur and required temporary repairs. This project included the replacement of all existing stainless steel piping between the ozone feed pumps and the ozone contactors with schedule 80 PVC pipe. M&I maintenance personnel performed the pipe replacements.

DSWTP POLYMER FEED SYSTEM

At Davis South Water Treatment Plant, a dry polymer feed system had been used for many years to supplement the water treatment process. Due to challenges associated with operating the old equipment and desiring a more efficient method of dosing, the District made the decision to switch over to a new wet polymer feed system. A new dosing skid was installed with support from multiple departments, who assisted in relocating power, rerouting communications, and plumbing the necessary piping to implement the updated system. After many efforts to commission the new equipment, polymer is now being dosed in a better and more efficient manner at Davis South Water Treatment Plant.



HOOPER TURNOUT LEAK

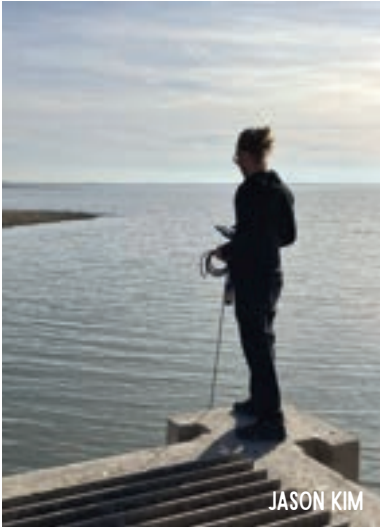


A failed fitting caused a significant leak and roadway failure on a culinary turnout that feeds Hooper Water Improvement District. District crews immediately mobilized and responded to isolate the leak and direct traffic. While repairing the pipeline, District crews also took advantage of the situation and replaced an isolation valve on the line to ensure the system remains operational for years to come.



DISTRICT OPERATIONS

DISTRICT WATER SAMPLING



JASON KIM

As part of a District project to design and eventually build a new water treatment facility, the District began additional sampling of Willard Bay Reservoir to verify various water quality parameters. In coordination with regulatory agencies, the District developed a sampling plan that included weekly sampling at multiple locations on Willard Bay. The sampling plan required the use of the District's pontoon boat, which was a tedious task given the low water levels in Willard Bay. Sampling was performed until October and will begin again in spring of 2026. The Willard Bay sampling was performed in addition to already weekly sampling trips throughout the watershed to collect water quality data. The efforts of lab personnel and other M&I staff are greatly appreciated in providing important water quality data for ongoing projects.



ZACH BONS

DISCONTINUATION OF FLUORIDE FEED SYSTEMS

The District has operated seven fluoride dosing stations in Davis County since the early 2000s when citizens voted to fluorinate the water. However, with the passage of HB 81 during the 2025 legislative session, fluoride in public water systems was prohibited statewide.

In response, the District decommissioned all existing fluoride feed systems. Each station was safely disconnected and the remaining fluorosilicic acid was disposed of through licensed hazardous chemical handlers.



DISTRICT OPERATIONS

WILLARD #1 MOTOR REFURBISHMENTS



The District wrapped up a multiple year motor refurbishment project at the Willard #1 Pumping Plant located near the South Marina of Willard Bay. The refurbishment project consisted of having each of the three 1,000 hp synchronous motors torn down, cleaned, tested, rotor coils replaced, and reinsulated after asbestos removal. Removal and reinstallation was performed by Water Supply & Power staff.

GATEWAY CANAL CONCRETE LINING

District crews perform maintenance and repair work annually on the Gateway Canal. After careful inspection, sections of the canal that have been damaged beyond repair are marked for replacement. Damage typically comes from ice heaving or settling along the slope of the hillside. Crews demolished and removed 25 concrete canal panels, prepared and compacted the sloped subgrade, and poured new high strength concrete tied into existing panels. Crews use a large concrete screed that was built in our shop and attaches to a long reach excavator that enables them to reach the far side of the canal and place the concrete appropriately.



MAINTENANCE PROJECTS

TRUNKLINE LEAK & REPAIR

A point of failure in a 24" secondary trunkline in Bountiful led to a massive leak in a portion of Bountiful Ridge Golf Course. Working with management teams at the golf course, District crews mobilized heavy equipment to access and excavate the pipeline. Having been installed prior to any development in the area, the pipeline was about 20' deep in the ground and required significant excavation to safely access the failed area. The pipe was exposed and a patch was welded in place by District staff.



WILLARD CANAL PHASE 10 LINING PROJECT

Phase 10 of the Willard Canal Lining project consisted of installing a 6" thick concrete liner through about 1,600 feet of the Willard Canal in Farr West. This year's phase also included modification of an existing 24" diameter turnout which feeds one of Weber-Box Elder Conservation District's pump stations. Construction started at the beginning of October 2025 and was substantially complete and ready for water by January 2026.



MAINTENANCE PROJECTS



WSWTP BACKWASH VALVE REPLACEMENT

Each operating water treatment plant in the District uses a conventional treatment process that includes coagulation/flocculation, sedimentation, filtration, and disinfection. One critical component of the filtration step in the process is backwashing the filters to maintain good flow and adequate performance of the filters. The District uses and relies on various remotely actuated valves to perform a backwash. At Weber South Water Treatment Plant, the main backwash valve failed and did not allow for filters to be backwashed. Quick work was needed to replace the valve and ensure proper operation of the filters and the plant.

12TH STREET CULINARY LEAK REPAIR



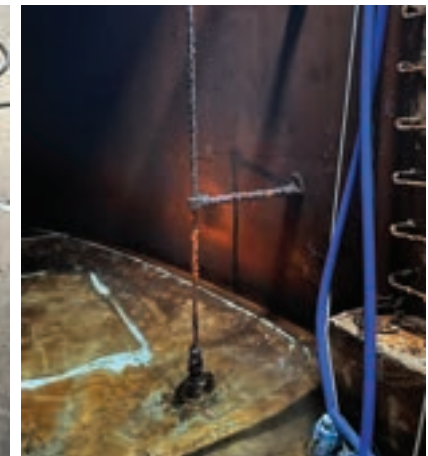
District crews responded to a large culinary leak on 12th street in fall of 2025. A pressure point on the bottom of the pipe, combined with high water pressure in the pipeline caused the pipe to split in half and created a 20' wide crater in the busy roadway. District crews worked around the clock to excavate the leak and remove the failed portions of the pipe. In the end, about 30' of pipeline and about 1,500 square feet of roadway was replaced. The exceptional work of District Maintenance and Operation crews enabled the system to be tied back in and turned on with no significant impacts to customers.



DNWTP 1 MG TANK REPAIRS

The 1 MG storage tank located at Davis North Water Treatment Plant was designed and constructed in the mid-1950s. The tank is still in operation and during a recent inspection, divers noted cracks that had developed in a few locations in the tank.

In response, the District took the tank offline for approximately one week to perform crack and joint repairs. As a result, the District coordinated with customer entities to ensure sufficient water supply while the DNWTP was shut down to ensure the safety of the contractors performing the repairs and the success of the work being completed.



MAINTENANCE PROJECTS

WATER SUPPLY & POWER PROJECTS

The Water Supply & Power Department had a busy year in 2025. They were responsible for operating and maintaining critical infrastructure to deliver water to the District's 3 water treatment plants, as well as wholesale and retail irrigation customers along the Wasatch Front. Maintenance included teardown and repair of 15 large irrigation pumps, several large pressure reducing valves, and many large mechanical water meters at the end of the irrigation season. From the 3 hydroelectric powerplants that WS&P Department staff operate and maintain, approximately 16,800,000 kilowatt-hours of electricity was generated and made available for use at all District facilities, greatly reducing operational power costs.



GATEWAY POWERPLANT TRANSFORMER REPLACEMENT

The two original 2,000 KVA electrical transformers at the Gateway Powerplant were installed in 1957 and had begun leaking oil. New 2,500 KVA transformers were ordered in early 2023 to replace the old ones.

The upsize allows the generators to run at full power, which was not previously possible. The new transformers took over a year and a half to arrive on site. Once received, Water Supply & Power staff worked through the winter of 2024–2025 to remove the old transformers and have the new transformers installed and ready to generate power for the spring runoff.



WATERSHED TOUR



In June 2025, the District hosted over 100 local leaders at the biannual Watershed Tour. Guests were able to visit portions of the District's watershed and tour infrastructure not typically open to the public. This educational tour provides our customer agencies a better understanding of District operations and a behind-the-scenes look at each stage involved in storing, treating, and delivering reliable, safe, and ample supplies of water.



WATERSHED TOUR



100+
Government & City
Officials Attended



5
Major District
Facilities Visited



Beginning the tour at Smith & Morehouse Reservoir, guests discussed replacement water, recreation, and District expansion projects. Then guests visited Rockport Reservoir and learned about water quality and the function of pump stations. Echo Reservoir was the next stop, and gave guests the opportunity to go inside the hydropower station and explore the penstock of the dam. After lunch, attendees stopped at the Gateway facilities and saw where the canal feeds into the tunnel through the gates and rakes. The last stop on the tour was inside the District's Davis North Water Treatment Plant and Lab and concluded with a stroll in the Conservation Garden.



TAPPING INTO OUR PEOPLE



KENNY SCHOW

YEARS OF SERVICE

5

Alex Baldwin
Kolt Douglas
Suzy Eppens
Jordan Hendrix
Josh Hogge
Scott Jenkins
Paul Kiesz
Marisol Martinez
Angie Osguthorpe

10

Chad Montgomery
Adam Moulding
Janice Sachun

15

Rex Lee
Greg Pierce
Kendall Searle

20

Mike Alverson
Deena Harris
Lee Smith

35

Scott Paxman

HIRING STATS

4

New Positions Added

750

Processed Applications

107

Conducted Interviews

9

New Full-Time Employees

16

Seasonal Employees

HONORING OUR EMPLOYEES

EMPLOYEES OF THE YEAR



ALEX BALDWIN
Application Developer



MARISOL MARTINEZ
Accounting Coordinator



JOSEPH PETERSON
Irrigation Operator



In Loving Memory **BEN LOVE**

30 Years of Dedication, Hard Work, & Friendship

Ben was a Lead Irrigation Operator & proved to be a key team member who demonstrated an incredible work ethic rarely seen. He ensured the maintenance & safety of District facilities as well as the reliable delivery of water to farmers & residents. His dedication & willingness to get the job done whenever he was called upon was a great service to the citizens of the area. We are grateful for his many years of service to Weber Basin Water & the community.

FINANCE & ECONOMICS

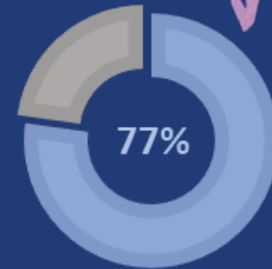
Fy 2025 Net Position

\$434,741,174

The District's overall Net Position increased 14.2% or \$54.2 Million from the prior fiscal year primarily due to the additions to capital assets. Net Position is comprised of:

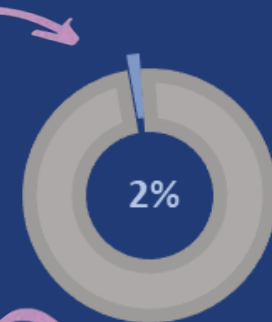
NET INVESTMENT IN CAPITAL ASSETS

The most substantial portion of net position (\$336 Million) is invested in capital assets. These, along with the approximate \$6 Billion (PV) of federal facilities are employed by the District to fulfill its responsibility as the regional water supplier.



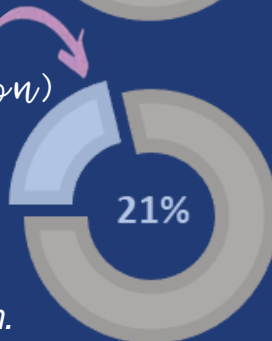
RESTRICTED NET POSITION

The portion of net position (\$7 Million) that is restricted represents funds that have been obligated to certain activities such as payment of debt, unspent bond proceeds, retainages held, and customer deposits.



UNRESTRICTED NET POSITION

The remaining portion of net position (\$92 Million) is considered unrestricted. These funds include reserves which will be combined with grant, loan, and future bond issuances needed to fund the District's ongoing operations and *Capital Assets Plan*.



ASSETS

2025

Current Assets	\$160,423,380
Sinking Fund & Reserve Assets	21,997,564
Lease Receivable	1,430,211
*Capital Assets	504,751,758
Deferred Outflows of Resources	2,880,577
TOTAL ASSETS & DEFERRED OUTFLOWS:	\$691,483,490
<i>*Net depreciation and federally owned assets</i>	

LIABILITIES & NET POSITION

2025

Current & Other Liabilities	\$37,507,823
Long-Term Liabilities	191,993,863
Deferred Inflows of Resources	27,240,630
Net Position	434,741,174
TOTAL LIABILITIES & NET POSITION:	\$691,483,490

In the Spotlight

- Unmodified (clean) opinion on annual external audit
- "very low" risk level on annual fraud risk assessment
- Received \$24.8 Million in federal and state grants
- Closed on \$114 Million in Federal WIFIA funds
- Started the RFP process to select a new ERP system

FINANCE & ECONOMICS

INFLOWS	2025
Water Sales	\$46,569,882
Taxes & Fee-in-Lieu of Taxes	26,105,682
Interest	6,241,391
Miscellaneous	29,667,298
Net Use of Loan/Bond Proceeds	63,245,705
Use of Reserves	28,507,863
TOTAL INFLOWS:	\$200,337,821
OUTFLOWS	2025
Operating Expenses	\$34,142,599
Federal Facilities R&R	10,446,536
Interest Expense	1,649,327
Loan & Bond Payments	31,530,466
Capital Improvements	96,631,508
Miscellaneous	381,873
Additions to Reserves	25,555,512
TOTAL OUTFLOWS:	\$200,337,821

Fy 2025 Sources & Uses

The District adopted a Balanced Budget of **\$251.8 MILLION**

The approximate \$51.5 Million difference between budgeted and actual expenses is due to timing of expenditures and related receipt of grant/loan funds for ongoing capital projects. The District continues its planned investment/capital outlay for water development projects and the repair/replacement of aging infrastructure.

Debt service during the year totaled \$33.2 Million and included the advanced refunding of the 2015A bonds, resulting in an economic gain of \$605 Thousand. The District has set a conservative policy of 1.75x coverage. For fiscal year 2025 the District's debt service ratio was 5.41. Including the District's unrestricted bond reserves, total coverage increases to 6.80. The strategic buildup of debt service reserves support the District's significant Capital Asset Plan and anticipated debt issuances.

AAA/AA+ Municipal Bond Rating
From Fitch and S&P Global

Fy25 Property Tax Bill Breakdown
\$25 Million

Federal Project
Repayment

4¢



Federal Facility
Repair/Replacement

73¢

Federal Facility
Operations

7¢

Conservation

14¢

*Regional
Programs

1¢

*Includes participation in basin-wide operations/activities, some of which are legislatively mandated.

PLANNING FOR THE FUTURE

EDUCATION



4,640

Students Attended
School Tours from 69
Davis County Schools



32

Landscape
Classes Offered



2,250

Attended the District's
Community Events—
Spring Garden Fair &
Fall Spooktacular

PRODUCT REBATES



\$85,359

Residential Smart Controllers



\$58,005

Commercial Smart Controllers



\$20,851

Low Flow Toilets



333,252

Total Square Feet of
Lawn Removed



PLANNING FOR THE FUTURE



LEARNING GARDEN RENOVATION

As part of its ongoing effort to reduce unnecessary lawn, the District began designing four new yard demonstration projects, scheduled for completion by May 2026. Several larger garden areas have already been re-landscaped with waterwise plants, providing practical examples of how water savings can be achieved. The District is tracking water use, maintenance, and costs to measure effectiveness. Additionally, half of the large grass area near the pavilion was replaced with Tahoma 31 warm-season grass, installed using both sod and sprigs. Establishment, water use, and dormancy will continue to be evaluated.

COMMUNITY OUTREACH

In 2025, the District offered 32 landscape classes, seeing increased attendance. The courses cover all aspects of residential landscape planning and management and are also made available online, along with additional resources to help residents reduce outdoor water consumption.

The Spring Garden Fair and Fall Spooktacular were both held on beautiful weather days and continue to gain in popularity as fun, family activities that bring people to the Learning Garden.



965

Learning Garden
Facebook Followers



169

Learning Garden
Instagram Followers



529

YouTube
Subscribers



2025 BY THE NUMBERS



JAMES JEWETT



16,700 MWh

Clean Electricity Generated
by Hydroelectric
Powerplants



2,854

Meters Installed
& Activated



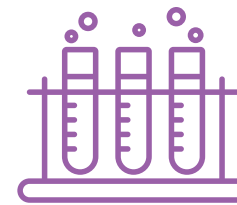
17.8 Billion

Gallons of
Treated Water Delivered



2,440 Tons

Treatment Solids
Hauled



400,000

Gallons of Treatment
Chemical Used



\$6.5 Billion

Facilities Protected &
Maintained



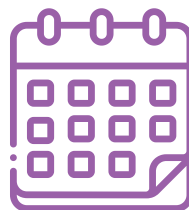
11,811

Lab Samples
Processed



928,084

Pounds of Salt Used
to Make Chlorine



365 days

Facilities Were in
Operation



710,000

People Served

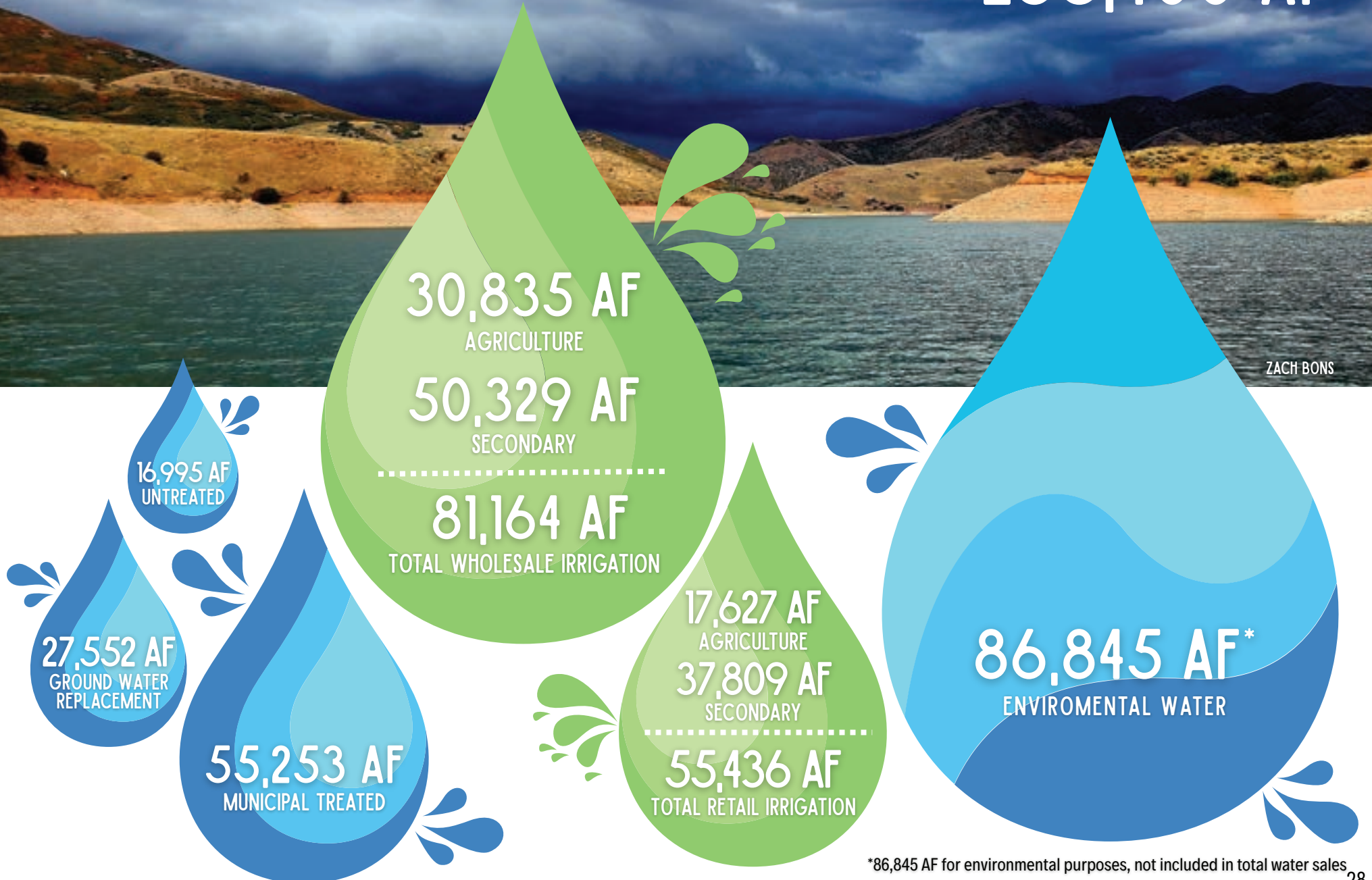


\$24.8 Million

Federal & State
Grant Monies

TOTAL WATER SALES

236,400 AF



ZACH BONS

*86,845 AF for environmental purposes, not included in total water sales

SUMMARY OF IRRIGATION CONTRACTS

IRRIGATION COMPANY WATER USE (ACRE FEET)

#	Contracting Entity	Contract Amount	Delivery Loss	Net Useable
1	Benchland Irrigation	4,975	498	4,478
2	Bountiful Irrigation	15,500	1,550	13,950
3	Centerville Duel Creek	2,891	289	2,602
4	Chalk Creek Irrigation	643	64	579
5	CO-OP Farms Irrigation	300	30	270
6	Croyden Irrigation	450	45	405
7	Davis & Weber Counties Canal	1,084	108	976
8	East Porterville Irrigation	200	20	180
9	East Wanship / Gibbons & Pace	100	10	90
10	Eden Irrigation	1,200	120	1,080
11	Emmertsen Irrigation	100	10	90
12	Felt, Peterson, Slater Irrigation	100	10	90
13	Haight's Creek Irrigation	7,008	701	6,307
14	Hill Air Force Base Golf Course	640	64	576
15	Hill Field At 193	139	14	125
16	Hooper Irrigation	5,663	566	5,097
17	Huntsville Irrigation	700	70	630
18	Huntsville So Bench Irrigation	600	60	540
19	Kays Creek Irrigation	2,000	200	1,800
20	Kaysville Irrigation	1,691	169	1,522
21	Lagoon Amusement Park	225	23	203
22	Layton Canal & Irrigation Company	5,564.50	556	5,008
23	Littleton-Milton Irrigation	300	30	270
24	Middle Fork Irrigation	830	83	747
25	Mountain Canal Company	1,297	130	1,167
26	Mountain View Irrigation	822	82	739
27	North Morgan Irrigation	160	16	144
28	North Round Valley	150	15	135

#	Contracting Entity (Continued)	Contract Amount	Delivery Loss	Net Useable
29	North Salt Lake (Foxboro)	800	0	800
30	Oakridge Country Club	500	50	450
31	Ogden River Water Users Association	3,705	371	3,335
32	Peterson Irrigation	614	61	553
33	Pintail Duck Club	100	10	90
34	Roy Water Conservancy District	365	37	329
35	Salmaho Irrigation	167	17	150
36	So. Davis County Water Improvement District	3,210	321	2,889
37	South Morgan Water Company	400	40	360
38	South Ogden Conservation District	2,345	235	2,111
39	South Weber Water Improvement District	2,423	20	2,403
40	Sun Hills Golf Course	496	50	446
41	Syracuse City	1,738.10	154	1,584
42	Uintah Mountain Streams	200	20	180
43	Valley View Golf Course	370	37	333
44	Warren Irrigation	700	70	630
45	Weber Basin Job Corps	300	30	270
46	Weber-Box Elder Conservation District	4,714.77	471	4,243
47	Weber Canal Company	200	20	180
48	Welch Field Ditch	240	24	216
49	West Bountiful Golf	294	29	265
50	West Hoytsville Irrigation	300	30	270
51	West Wanship Irrigation	150	15	135
52	Wilson Irrigation	1,500	150	1,350
TOTALS		81,164	7,795	73,369

D&WCCC Share Value = 6.00 AF/Share

For South Weber WID, the 10% losses were only applied to the 200 AF of Dist 3 water. The remainder is based on the D&W AF/share value.

For Syracuse City, the 10% losses were only applied to the 1543.1 AF of non-trilateral contract water. The remaining 150 AF of trilateral water is based on the D&W AF/share value.

SUMMARY OF M&I WATER CONTRACTS

TREATED WATER

CONTRACTING ENTITY	Contract Amount
DAVIS COUNTY	
1 BOUNTIFUL CITY	1,000.00
2 CENTERVILLE CITY	500.00
3 CHEVRON, USA	2,000.00
4 CLEARFIELD CITY	5,348.00
5 CLINTON CITY	1,630.00
6 FARMINGTON CITY	501.00
7 FRUIT HEIGHTS CITY	745.00
8 GENEVA ROCK	44.00
9 HILL AIR FORCE BASE	1,018.79
10 KAYSVILLE CITY*	2,500.00
11 LAYTON CITY	7,329.00
12 MIDA-FALCON HILL	20.00
13 MUTTON HOLLOW WID	220.00
14 NORTH SALT LAKE CITY	2,015.00
15 SOUTH DAVIS COUNTY WID	360.00
16 SOUTH WEBER CITY	1,174.21
17 SUNSET CITY	1,400.00
18 SYRACUSE CITY	2,275.00
19 TESORO	5.00
20 WASATCH INTEGRATED WASTE MGMT	10.00
21 WEBBS CANYON WATER COMPANY	9.00
22 WEBER BASIN JOB CORP	60.00
23 WEST BOUNTIFUL CITY	750.00
24 WEST POINT CITY	751.75
25 WOODS CROSS CITY	100.00
TOTAL DAVIS COUNTY	31,765.75

#	CONTRACTING ENTITY	Contract Amount
	MORGAN COUNTY	
1	REPLACEMENT WATER	4,781.30
	SUMMIT COUNTY	
1	REPLACEMENT WATER	13,221.44
	WEBER COUNTY	
1	SILVERLINE HOLDINGS	5.00
2	BONA VISTA WATER IMP. DIST	3,786.00
3	COMPASS MINERALS	900.00
4	HOOPER WATER IMP. DISTRICT	108.5
5	MJK FABRICATION	5.00
6	OGDEN CITY	7,000.00
7	PLEASANT VIEW CITY	275.00
8	RIVERDALE CITY*	1,229.12
9	ROY CITY	3,263.00
10	SOUTH OGDEN CITY*	785.00
11	TAYLOR-WEST WEBER WID	899.72
12	UINTAH HIGHLANDS WID	247.00
13	UINTAH CITY	473.58
14	WASHINGTON TERRACE CITY	1,000.00
15	WEBER COUNTY-MOULDING	5.00
16	WEST WARREN- WARREN WID	545.45
17	WESTERN BASIN WATER COMPANY	2,400.00
18	WESTERN ZIRCONIUM	560.00
19	REPLACEMENT WATER	9,549.18
	TOTAL WEBER COUNTY	23,487.37

UNTREATED WATER

#	CONTRACTING ENTITY	Contract Amount
1	BIG WEST OIL	100.00
2	CHEVRON, USA	1,200.00
3	COMPASS MINERALS	7,980.00
4	OGDEN CITY	1,500.00
5	MOUNTAIN REGIONAL SSD	2,100.00
6	NORTH SALT LAKE CITY	38.00
7	PARK CITY	2,900.00
8	PARSONS	22.00
9	SUMMIT WATER DIST. COMPANY	1,150.00
10	TESORO	5.00
	TOTAL UNTREATED	16,995.00

TOTAL REPLACEMENT WATER	27,552.00
TOTAL TREATED WATER	55,253.12
TOTALS	72,248.12

* Amount of Burch Creek water treated for South Ogden City:
 * Amount of Holmes Creek water exchanged for Kaysville City:
 * Amount of surface water exchanged for Riverdale City:

The following entities added to their contracts during 2025: West Warren-Warren WID (2.25), Taylor-West Weber WID (48.9), South Weber City (12.6), Riverdale City (22.1), Uintah City (3.72), MIDA (5), and West Point City (51.75)

PROJECT POWER OPERATIONS

PEAK PROJECT POWER LOAD - KW

#	Name	January	February	March	April	May	June	July	August	September	October	November	December
1	Peak Power Load (KW)	3,965	3,560	4,491	1,730	3,360	7,917	7,501	7,262	5,816	3,435	2,116	2,116

PEAK PROJECT POWER GENERATION & LOAD - KWH

#	Name	January	February	March	April	May	June	July	August	September	October	November	December	TOTAL
1	*Net Generation Causey Plant	27,000	33,000	347,000	865,000	1,105,000	401,000	462,000	376,000	164,000	77,000	33,000	22,000	3,912,000
2	Net Generation Gateway Plant	-22,400	-3,680	-7,360	484,800	1,900,600	1,581,680	1,400,920	1,360,040	1,034,600	252,680	-8,960	-10,400	7,962,520
3	Net Generation Wanship Plant	-18,100	-17,200	-19,100	-15,200	325,500	1,287,900	1,326,700	1,199,100	835,900	-7,500	-15,500	-17,600	4,864,900
4	Total Output	-13,500	12,120	320,540	1,334,600	3,331,100	3,270,580	3,189,620	2,935,140	2,034,500	322,180	8,540	-6,000	16,739,420
5	Project Use	1,783,303	1,658,132	2,534,669	987,018	1,426,089	3,983,878	4,882,154	4,235,300	3,279,736	1,420,362	1,206,419	886,774	28,283,834
6	Delivered To CRSP	-1,823,803	-1,679,012	-2,561,129	-517,418	800,011	-1,114,298	-2,154,534	-1,676,160	-1,409,236	-1,175,182	-1,230,879	-914,774	-15,456,414

* Not Added To CRSP

WATER USED FOR POWER GENERATION (ACRE-FEET)

#	Name	January	February	March	April	May	June	July	August	September	October	November	December	TOTAL
1	Causey	558	511	2,825	6,741	7,482	2,786	3,370	3,026	1,543	876	506	544	30,768
2	Gateway	0	0	0	3,752	14,896	12,170	10,482	10,188	8,138	2,290	0	0	61,916
3	Wanship	0	0	0	0	2,980	11,632	12,632	11,908	8,950	220	0	0	48,322
Total		558	511	2,825	10,493	25,358	26,588	26,484	25,122	18,631	3,386	506	544	141,006

RESERVOIR OPERATIONS

STORAGE CONTENT - AS OF LAST DAY OF MONTH (ACRE-FEET)

#	Name	January	February	March	April	May	June	July	August	September	October	November	December
1	Causey	4,428	5,067	4,556	4,758	6,803	6,456	4,520	2,726	2,312	2,642	3,238	3,816
2	East Canyon	37,075	39,130	42,333	45,880	48,334	44,240	38,620	33,178	30,080	30,600	31,550	32,780
3	Echo	54,890	59,950	65,340	72,180	73,360	66,040	50,610	36,100	30,240	30,140	33,200	36,620
4	Lost Creek	13,060	13,515	14,420	16,780	18,385	16,510	14,050	11,690	10,040	10,070	10,196	10,430
5	Pineview	79,810	85,380	88,780	103,880	110,150	99,950	85,120	68,170	58,020	59,050	60,730	63,300
6	Smith-Morehouse	3,978	4,009	4,106	4,320	7,817	7,575	6,011	5,106	4,025	4,009	3,931	3,914
7	Wanship	37,680	40,985	44,740	49,580	59,150	56,850	45,920	33,240	25,530	28,220	30,170	32,100
8	Willard	167,950	179,428	201,855	200,686	199,152	140,903	104,248	93,151	87,074	86,295	85,288	84,443
Total		398,871	427,464	466,130	498,064	523,151	438,524	349,099	283,361	247,321	251,026	258,303	267,403

TOTAL RELEASES - AS OF THE LAST DAY OF THE MONTH (ACRE-FEET)

#	Name	January	February	March	April	May	June	July	August	September	October	November	December	TOTAL
1	Causey	558	511	2,825	6,741	9,177	2,786	3,370	3,026	1,543	876	506	544	32,463
2	East Canyon	496	440	649	814	1,005	5,241	6,450	6,020	3,644	820	394	336	26,308
3	Echo	-	-	-	-	12,122	24,762	25,944	27,002	17,218	3,982	-	-	111,030
4	Lost Creek	497	426	480	497	1,110	2,575	2,916	2,776	2,024	535	462	435	14,733
5	Pineview	1,055	1,282	14,772	13,756	14,367	14,360	16,570	18,711	12,283	1,515	588	777	110,036
6	Smith-Morehouse	553	525	793	4,052	11,031	5,843	2,221	1,187	460	311	292	269	27,537
7	Wanship	1,528	1,306	1,409	1,464	5,018	16,244	14,352	13,399	9,432	1,969	1,620	1,632	69,373
8	Willard	5,972	398	286	304	508	53,884	29,600	5,950	2,606	1,048	1,020	1,044	102,620
Total		10,659	4,887	21,214	27,628	54,338	125,695	101,423	78,071	49,210	11,056	4,882	5,037	494,099

NET PRODUCTIONS OF CULINARY WATER FROM TREATMENT PLANTS & WELLS 2025

WATER DELIVERIES (ACRE-FEET)

#	Month	WEBER SOUTH PLANT		DAVIS NORTH PLANT		DAVIS SOUTH PLANT		PRODUCTION TOTAL OF ALL TREATMENT PLANTS	PRODUCTION TOTAL OF ALL WELLS	GROSS TOTAL PRODUCTION OF WELLS & TREATMENT PLANTS
		TOTAL MONTHLY PRODUCTION	% OF PLANT CAPACITY	TOTAL MONTHLY PRODUCTION	% OF PLANT CAPACITY	TOTAL MONTHLY PRODUCTION	% OF PLANT CAPACITY			
1	January	709.00	23.63%	1,191.97	27.72%	271.79	17.54%	2,172.76	840.13	3,012.89
2	February	652.00	21.73%	610.05	14.19%	250.25	16.15%	1,512.30	959.07	2,471.37
3	March	542.00	18.07%	353.22	8.21%	78.07	5.04%	973.30	1,682.86	2,656.16
4	April	969.00	32.30%	1,558.92	36.25%	84.62	5.46%	2,612.53	164.11	2,776.65
5	May	1,012.00	33.73%	2,203.66	51.25%	449.08	28.97%	3,664.74	276.96	3,941.70
6	June	848.00	28.27%	2,736.25	63.63%	595.99	38.45%	4,180.24	1,386.18	5,566.42
7	July	1,136.00	37.87%	2,762.60	64.25%	613.55	39.58%	4,512.15	1,890.16	6,402.31
8	August	1,431.00	47.70%	2,429.60	56.50%	591.56	38.17%	4,452.16	1,597.40	6,049.56
9	September	1,008.00	33.60%	2,159.20	50.21%	488.81	31.54%	3,656.00	1,194.35	4,850.35
10	October	942.00	31.40%	2,066.98	48.07%	440.16	28.40%	3,449.14	426.44	3,875.58
11	November	944.00	31.47%	1,654.95	38.49%	535.19	34.53%	3,134.13	155.81	3,289.94
12	December	554.00	18.47%	1,138.66	26.48%	607.21	39.17%	2,299.87	85.96	2,385.83
TOTAL		10,747.00		20,866.06		5,006.27		36,619.33	10,659.43	47,278.76

PERCENT OF INDIVIDUAL PLANT PRODUCTION COMPARED TO TOTAL PLANT PRODUCTION

	PRODUCTION % OF TOTAL	
WEBER SOUTH PLANT	10,747.00	29.35%
DAVIS NORTH PLANT	20,866.06	56.98%
DAVIS SOUTH PLANT	5,006.27	13.67%
TOTAL	36,619.33	100.00%

PERCENT OF PRODUCTION COMPARED TO TOTAL PLANT & WELL PRODUCTION

	PRODUCTION % OF TOTAL	
WEBER SOUTH PLANT	10,747.00	22.73%
DAVIS NORTH PLANT	20,866.06	44.13%
DAVIS SOUTH PLANT	5,006.27	10.59%
WELLS	10,659.43	22.55%
TOTAL	47,278.76	100.00%

MONTHLY CAPACITY

WEBER SOUTH PLANT	32 MGD	3,000 ACRE-FEET	22,500 GPM
DAVIS NORTH PLANT	46 MGD	4,300 ACRE-FEET	32,000 GPM
DAVIS SOUTH PLANT	16 MGD	1,550 ACRE-FEET	11,250 GPM
WELLS	35.6 MGD	3,387 ACRE-FEET	24,720 GPM
TOTAL CAPACITY	129.6 MGD	12,237 ACRE-FEET	90,470 GPM

WATER PUMPED FROM WEBER BASIN WELLS 2025 (IN ACRE-FEET)

#	CULINARY WELLS	January	February	March	April	May	June	July	August	September	October	November	December	TOTAL
1	BEN LOMOND	-	-	-	-	-	-	0.08	86.78	127.07	109.59	-	-	323.51
2	CLEARFIELD #1	-	-	-	-	-	-	180.91	32.00	-	-	-	-	212.91
3	CLEARFIELD #2	95.05	52.80	205.33	-	-	-	-	-	-	-	-	-	353.18
4	DISTRICT WELL #2	5.63	30.99	159.19	-	46.44	149.38	135.18	180.77	6.91	-	-	-	714.50
5	DISTRICT WELL #3	-	-	-	-	-	228.25	55.02	-	-	-	-	-	283.27
6	FAIRFIELD	58.72	373.02	491.24	-	-	-	545.21	501.16	-	-	-	-	1,969.34
7	LAYTON	158.93	86.61	204.69	-	-	258.63	8.18	9.18	168.91	153.91	53.94	-	1,102.97
8	NORTH OGDEN	-	-	-	-	48.85	65.69	66.51	61.28	65.65	27.85	-	-	335.83
9	ORCHARD DR.	-	-	-	-	-	23.63	27.91	27.39	20.91	-	-	-	99.84
10	RIVERDALE	122.30	155.27	135.95	-	-	-	68.51	-	92.64	9.82	101.87	85.96	772.32
11	SOUTH DAVIS	26.77	-	185.76	164.11	-	151.03	267.47	252.62	239.04	106.07	-	-	1,392.86
12	SOUTH WEBER #1	364.28	220.99	300.72	-	157.10	418.81	444.10	368.82	387.29	13.56	-	-	2,675.67
13	SOUTH WEBER #2	-	-	-	-	-	-	-	-	-	-	-	-	0.00
14	DAVIS BOULEVARD	8.45	39.40	-	-	-	-	-	-	-	-	-	-	47.84
15	NORTH WEBER	-	-	-	-	24.57	90.75	91.10	77.39	85.93	5.64	-	-	375.38
TOTAL		840.13	959.07	1,682.86	164.11	276.96	1,386.18	1,890.16	1,597.40	1,194.35	426.44	155.81	85.96	10,659.43
ACCUM. TOTAL		840.13	1,799.20	3,482.07	3,646.18		5,309.33	7,199.48	8,796.88	9,991.23	10,417.67	10,573.47	10,659.43	10,659.43

These culinary wells are 13 of the over 20 facilities which are operated by project generated power.

#	IRRIGATION WELLS	January	February	March	April	May	June	July	August	September	October	November	December	TOTAL
1	Farmington Well #1	0	0	0	0	0	0	0	0	0	0	0	0	0
2	Farmington Well #2	0	0	0	0	0	0	0	0	0	0	0	0	0
3	West Bountiful Golf Well	0	0	0	0	0	0	0	0	0	0	0	0	0
4	West Bountiful 5th South	0	0	0	0	0	0	0	0	0	0	0	0	0
5	Mills Park Well	0	0	0	0	0	0	13	71	38	0	0	0	122
6	Washington Terrace Well	0	0	0	167	0	186	169	126	183	0	0	0	832
Sum of all wells													954	

WEBER BASIN WATER PRINCIPAL INFRASTRUCTURE

AQUIFER STORAGE & RECOVERY

#	Name	Location	Pond Area (acres)	Capacity (cfs)	Acquisition Dates
1	ASR	Davis County	7.5	8	2002

HYDRO GENERATION POWER PLANTS

#	Name	Location	Type	Capacity (kw)	Acquisition Dates
1	Causey	Eastern Weber County	3 Units	2,200	1999-2021
2	Gateway	Mountain Green	2 Units	4,275	1957-1958
3	Wanship	Wanship	1 Unit	1,950	1957-1958

CANALS, TUNNELS, & PIPELINES

#	Name	Location	Type	Capacity (cfs)	Length (Miles)	Acquisition Dates
1	Davis Aqueduct	Davis County	Concrete Pipe	355	23.0	1954-1957
2	Gateway Canal	Morgan County	Concrete-Lined	700	8.5	1954-1956
3	Gateway Tunnel	Morgan & Davis County	Concrete-Lined	435	3.3	1952-1954
4	Layton Canal	Davis County	Earth-Lined/Concrete-Lined/Pipe	260	18.	1962-1964
5	M&I Pipelines	Davis & Weber County	Varies 6"-48"	Varies	88.64	1955-2025
6	Ogden Valley Canal	Weber County	Part Earth-Lined	35	9.2	1962-1964
7	Secondary Pipelines	Davis & Weber County	Varies 2"-36"	Varies	495.68	1955-2025
8	Weber Aqueduct	Weber County	Concrete Pipe	80	5.0	1954-1956
9	Western Summit County	Summit County	Ductile Iron	8.9	9.0	2013
10	Willard Canal	West Weber County	Earth-Lined/Concrete-Lined	1,050	11.0	1961-1963
11	Davis Aqueduct Parallel Pipeline	Davis County	Steel Pipe	185	2.2	2024-2025
12	Highway 224 Interconnect Pipelines	Summit County	HDPE 18"	5.35	2.24	2025

DAMS & RESERVOIRS

#	Name	Location	Type	Height (ft)	Capacity (af)	District's Active Capacity (af)	Acquisition Dates
1	Causey	Eastern Weber County	Earth & Rock	200	7,870	6,870	1962-1964
2	East Canyon	Southern Morgan County	Concrete Arch	245	51,200	20,100	1965-1967
3	Lost Creek	Eastern Morgan County	Earth & Rock	220	22,500	20,010	1964-1966
4	Pineview	Ogden Valley, Weber County	Earth & Rock	91	110,150	66,228	1955-1957
5	Smith & Morehouse	South-Eastern Summit County	Earth & Rock	82	8,350	6,560	1984-1988
6	Wanship/Rockport	Summit County	Earth & Rock	156	62,120	60,000	1954-1957
7	Willard Bay	Southern Box Elder County	Earth	36	247,189	222,273	1957-1963

WEBER BASIN WATER PRINCIPAL INFRASTRUCTURE

PUMPING PLANTS

#	Name	Location	Capacity (cfs)	Height of Lift (ft)	Acquisition Dates
1	Antelope Booster	Layton	22	50	1978
2	East Bountiful	Bountiful	18	475	1955
3	East Layton	Layton	9	65	1955
4	Gateway	Mountain Green	150	150	1995
5	Kanesville #1	West Haven	3	218	2000
6	Kanesville #2	West Haven	10	315	2001
7	Layton Canal	West Haven	260	23	1955
8	Rockport	Wanship	25	45	2009
9	Roy Drought Relief	Roy	150	340	1981
10	Sand Ridge East	Layton	9	92	1955
11	Sand Ridge West	Layton	15	138	1955
12	South Davis	Bountiful	18	530	1955
13	Uintah Bench	South Ogden	18	365	1955
14	Val Verda	Bountiful	6	240	1955
15	Weber South	Ogden	5	250	2023
16	Weber West	West Haven	10	335	2023
17	West Haven #1	West Haven	10	218	2003
18	West Haven #2	West Haven	8	230	2010
19	Willard #1	West Weber County	500	45	1960
20	Willard #2	West Weber County	250	20	1960

UNDERGROUND WATER WELLS

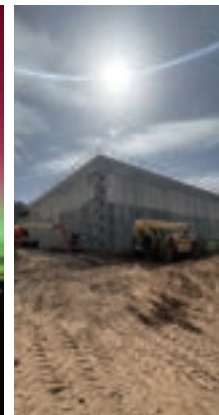
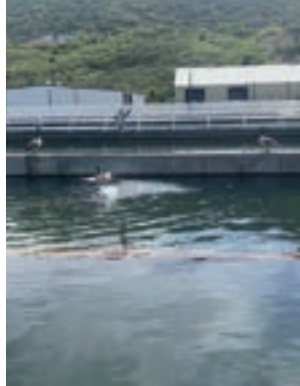
#	Name	Location	Type	Capacity (cfs)	Acquisition Dates
1	Ben Lomond	Harrisville	M&I	1.8	2001
2	Clearfield #1	Clearfield	M&I	5.0	1961
3	Clearfield #2	Clearfield	M&I	5.0	1961
4	Davis Boulevard	Bountiful	M&I	2.2	2003
5	District Well #2	South Weber	M&I	11.0	1985
6	District Well #3	South Weber	M&I	10.0	1990
7	Fairfield	Layton	M&I	10.0	1992
8	Farmington #1	Farmington	Irrigation	5.0	1995
9	Farmington #2	Farmington	Irrigation	5.0	1996
10	Laytona	Layton	M&I	5.0	1958
11	Mills Park	West Bountiful	Irrigation	2.2	2011
12	North Ogden	North Ogden	M&I	1.8	1967
13	North Weber	Harrisville	M&I	1.6	2006
14	Orchard Dr.	Bountiful	M&I	0.8	1991
15	Riverdale	Riverdale	M&I	6.6	1960
16	South Davis	Woods Cross	M&I	5.2	1961
17	South Weber #1	South Weber	M&I	10.0	1962
18	South Weber #2	South Weber	M&I	10.0	1962
19	Washington Terrace	Washington Terrace	Irrigation	4.0	2013
20	W Bountiful 5th South	West Bountiful	Irrigation	4.0	1992
21	W Bountiful Golf	West Bountiful	Irrigation	2.0	1993

DIVERSIONS

Name	Location	Pass-Through Capacity (cfs)	Acquisition Dates	
1	Ogden Valley	South Fork of Ogden River	2,000	1962-1964
2	Slaterville	Weber River West of Ogden	9,000	1956-1957
3	Stoddard	Weber River North of Morgan	6,000	1955-1956

WATER TREATMENT PLANTS

#	Name	Location	Capacity (MGD)	Acquisition Dates
1	Davis North WTP	Layton, Davis	46	1955
2	Davis South WTP	Bountiful, Davis	16	1955
3	East Canyon WTP	Jeremy Ranch Summit	5.5	2013
4	Weber South WTP	Ogden, Weber	32	1955



**WEBER BASIN WATER
CONSERVANCY DISTRICT**

2837 East Highway 193
Layton, Utah 84040
Phone 801-771-1677
Fax 801-544-0103
www.weberbasin.gov

